

4675 Missouri Flat Road  
Placerville, CA 95667  
(530) 622-5081

*Dr. Ron Carruth*  
*Superintendent*

EL DORADO UNION HIGH  
SCHOOL DISTRICT  
DEMOGRAPHIC STUDY 2019/20

November 2019



SchoolWorks, Inc.  
8331 Sierra College Blvd. #221  
Roseville CA, 95661  
  
Phone: 916-733-0402  
[www.SchoolWorksGIS.com](http://www.SchoolWorksGIS.com)

**TABLE OF CONTENTS**

	Page
INTRODUCTION.....	1
EXECUTIVE SUMMARY .....	1
METHODOLOGY .....	2
HISTORIC ENROLLMENT AND TRENDS .....	7
CLASSROOM COUNT AND CAPACITY .....	8
NEW HOUSING DEVELOPMENTS .....	9
SCHOOL PROJECTIONS.....	11
DISTRICT PROJECTIONS .....	28
SCHOOL FACILITY UTILIZATION .....	31

**CHARTS**

	Page
<b>10 YEAR ENROLLMENT HISTORY AND 6 YEAR ENROLLMENT PROJECTIONS.....</b>	<b>3</b>
<b>2020/21 1-YEAR ENROLLMENT PROJECTION BY SCHOOL .....</b>	<b>4</b>
<b>HISTORIC ENROLLMENT AND TRENDS .....</b>	<b>7</b>
<b>STUDENT YIELD RATE .....</b>	<b>9</b>
<b>NEW DEVELOPMENT LISTINGS USED IN PROJECTIONS .....</b>	<b>10</b>
<b>NEW DEVELOPMENT CONSTRUCTIONS .....</b>	<b>10</b>
<b>LOADING STANDARD ANALYSIS .....</b>	<b>11</b>
<b>CAPACITY &amp; PROJECTED ENROLLMENT</b>	
<b>EL DORADO HIGH .....</b>	<b>13</b>
<b>OAK RIDGE HIGH .....</b>	<b>15</b>
<b>PONDEROSA HIGH .....</b>	<b>17</b>
<b>UNION MINE HIGH.....</b>	<b>19</b>
<b>INDEPENDENCE HIGH.....</b>	<b>21</b>
<b>VIRTUAL ACADEMY.....</b>	<b>23</b>
<b>ISP .....</b>	<b>24</b>
<b>NPS.....</b>	<b>25</b>
<b>STUDENT ATTENDANCE MATRIX.....</b>	<b>26</b>
<b>STUDENT RESIDENCY AND ENROLLMENT COMPARISON .....</b>	<b>27</b>
<b>10 YEAR ENROLLMENT HISTORY &amp; 6 YEAR ENROLLMENT PROJECTION.....</b>	<b>28</b>
<b>ONE YEAR ENROLLMENT PROJECTION SUMMARY .....</b>	<b>29</b>
<b>ENROLLMENT PROJECTION SUMMARY BY GRADE .....</b>	<b>30</b>
<b>ENROLLMENT PROJECTION SUMMARY BY SCHOOL .....</b>	<b>30</b>
<b>SCHOOL FACILITY UTILIZATION .....</b>	<b>31</b>

**MAPS**

	Page
<b>DISTRICT MAP WITH STUDENT RESIDENTIAL LOCATIONS .....</b>	<b>5</b>
<b>HIGH SCHOOL BOUNDARIES AND COMPREHENSIVE HIGH SCHOOL LOCATIONS .....</b>	<b>6</b>
<b>NEW HOUSING DEVELOPMENTS .....</b>	<b>9</b>
<b>SCHOOL BOUNDARY MAPS</b>	
<b>EL DORADO HIGH .....</b>	<b>12</b>
<b>OAK RIDGE HIGH .....</b>	<b>14</b>
<b>PONDEROSA HIGH .....</b>	<b>16</b>
<b>UNION MINE HIGH.....</b>	<b>18</b>
<b>INDEPENDENCE HIGH.....</b>	<b>20</b>
<b>VIRTUAL ACADEMY.....</b>	<b>22</b>

## **Introduction**

This Demographic Study provides a comprehensive enrollment analysis for the El Dorado Union High School District. The district-wide and school-specific enrollment projections are meant to serve as a planning tool to help with both long- and short-term planning. Demographic Studies examine the factors that influence school enrollments, namely trends in demographics, birth rates, and housing development. They are also used as a tool to identify certain facility planning requirements such as capacity, utilization of existing facilities, planning for modernization or new construction, and attendance boundary redistricting. This Study provides information based on the 2019/20 District enrollments and programs, local planning policies and residential development. As these factors change and timelines are adjusted, the Demographic Study should be revised to reflect the most current information.

## **Executive Summary**

Located in the Sierra Nevada foothills between Sacramento and South Lake Tahoe, the District encompasses 1,250 square miles, including a large portion of El Dorado County's historic Gold Rush region. The area includes about 40 communities along U.S. Highway 50 corridor that span the county from Kyburz and Pollock Pines in the east to Latrobe and El Dorado Hills in the west.

El Dorado Union High School District includes four (4) comprehensive high schools, three (3) alternative schools, one (1) charter school, one (1) community day school, and one (1) Career Technical Education (CTE) program, which includes a Regional Occupational Program (ROP). El Dorado Union High School District has experienced a slow decline for the past 10 years from an enrollment of 6,966 students during the 2010/11 school year to a current enrollment of 6,806 students.

El Dorado Union High School District is projected to grow in enrollment by 0.72% (or 49 students) for the 2020/21 school year. The District is projected to decline slightly overall the next six (6) years, with a projected enrollment of 6,503 students in the 2025/26 school year. This is a total loss of 303 students, which is a decrease of 4.45%.

Future impacts from new housing development is predicated upon information provided by local municipalities on the development of 3,197 housing units over the next six (6) years. If the building rates increase or decrease, then the timeline shown in this Study will need to be modified accordingly. These projected new developments in the District's boundary are expected to generate 35 students next year, or a total of 444 students in the next six (6) years.

Based on current District loading standards and classroom space, the District has a net classroom capacity of 8,415 students, and a current enrollment of 6,806. This gives the District a current utilization factor of 80.9%. The projected utilization factor in six (6) years will be 77.3%. This assumes loading standards remain constant and no additional facilities are built or removed.

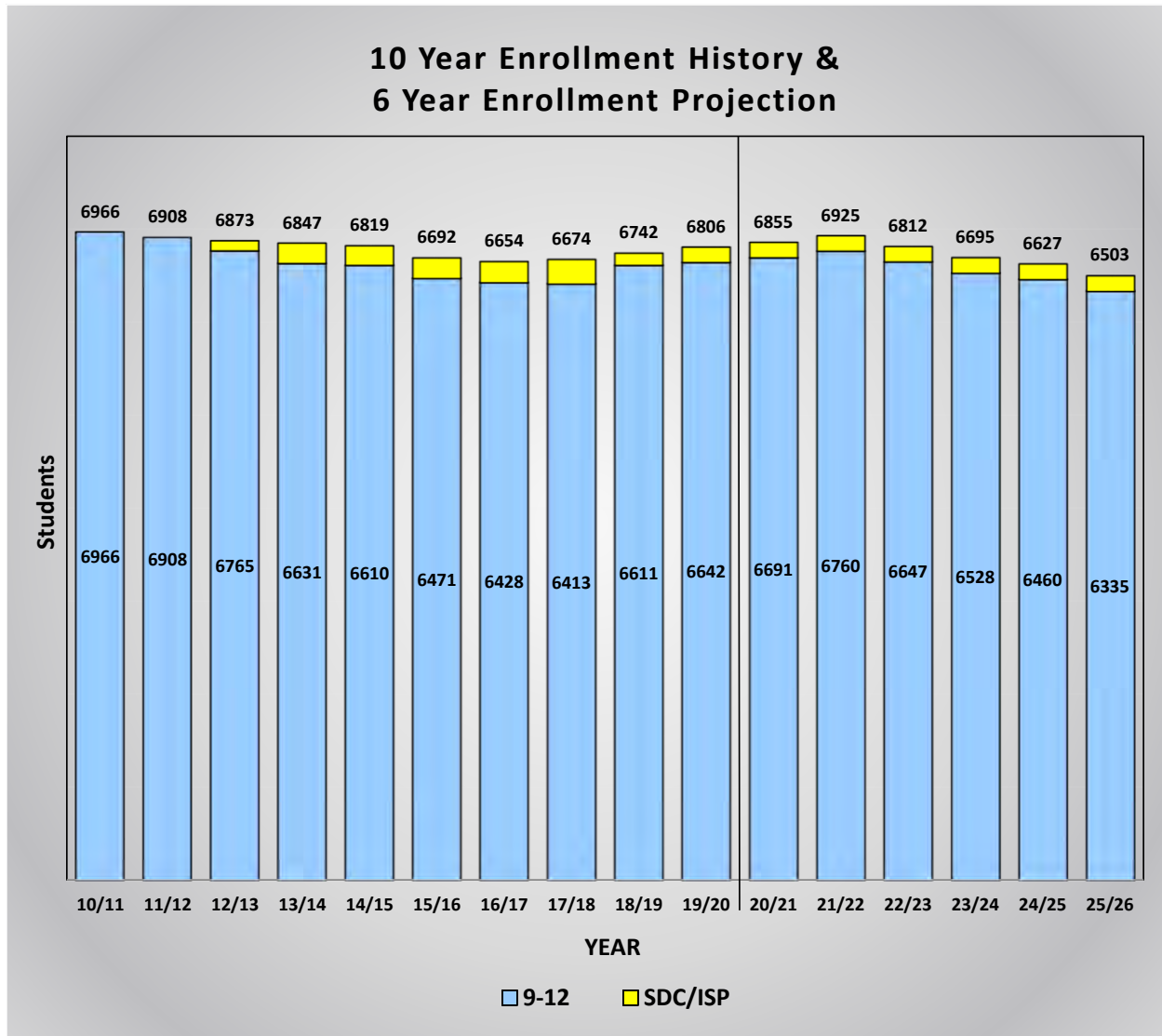
These projections assume the transfers between schools remain consistent. If changes in facilities, schedules, programs or policies are made, then the patterns may be impacted.

## **Methodology**

The enrollment projections for each school are generated using a State standard weighted cohort trend analysis. The basic projections are created by studying the individual geographic areas. Once the trends are analyzed for each area, the base projections are modified using the following procedures:

- a) New Housing Development rates and yield factors are compared to the historical impact of development, and if the future projections exceed the historical values, the projections are augmented accordingly.
- b) Inter-District student counts are not included in the base geographic trend analysis since these students reside outside of the District. Therefore, the current number of students-per-school and students-per-grade are added to the base projections.
- c) Intra-District students are those who transfer from one school to another. The number of students transferring into and out of each school are calculated and used to determine the difference between the projections for students living in each attendance area versus those that are projected to attend the school.
- d) The projections for special education students and alternative programs are created by assuming those programs typically serve a percentage of the total District population. Therefore, as the District grows or declines, the enrollment in those programs would increase or decrease accordingly.
- e) The number of students living in the boundary are used to generate the cohort factors. The weighted average of the three (3) years was determined with the current year weighted 50%, the prior year 33.3% and the last year 16.7%. This gives the current trends more value in determining the projections. Those cohorts are then used to determine the students who will be residing in each attendance area for the following years.

**10 Year Enrollment History and 6 Year Enrollment Projections**



The El Dorado Union High School District has slightly declined in enrollment over the past ten (10) years from 6,966 students in 2010/11 to the current enrollment of 6,806. This chart provides a summary of the last ten (10) years of historic enrollment and projected enrollment for the next six (6) years. The color blue represents the historic and projected enrollment for the high school grades 9-12. The color yellow represents the historic and projected enrollment for Special Day Class (SDC) and Independent Study Program (ISP) students. The entire District enrollment is shown at the top of each bar.

**El Dorado Union High School District**  
**Demographic Study**  
**DRAFT 2019/20**

**2020/2021 1 Year Enrollment Projection by School**

<b>El Dorado Union High School District</b>						
<b>Enrollment Projections</b>						
<b>YEAR 20/21, 1 Year Proj.</b>						
<b>School</b>	<b><u>9</u></b>	<b><u>10</u></b>	<b><u>11</u></b>	<b><u>12</u></b>	<b><u>SDC/ISP</u></b>	<b><u>TOTAL</u></b>
El Dorado High	342	304	289	228	0	1,163
Oak Ridge High	652	621	580	591	0	2,444
Ponderosa High	445	426	485	439	0	1,795
Union Mine High	268	293	264	242	0	1,067
Independence High	0	0	22	61	0	83
Virtual Academy	23	27	29	29	0	108
ISP	0	0	0	0	164	164
NPS	7	5	8	11	0	31
<b>Totals</b>	<b>1,737</b>	<b>1,676</b>	<b>1,677</b>	<b>1,601</b>	<b>164</b>	<b>6,855</b>
Current CalPADS	1,714	1,707	1,659	1,562	164	6,806
<b>Net Change</b>	<b>23</b>	<b>-31</b>	<b>18</b>	<b>39</b>	<b>0</b>	<b>49</b>
Cohort Change		-38	-30	-58		

El Dorado Union High School District has a current enrollment of 6,806 students. The projected enrollment for next year shows an increase of 49 students. This one (1) year summary analyzes the net change between the current District enrollment by school and by grade, and the projected enrollment for 2020/21.

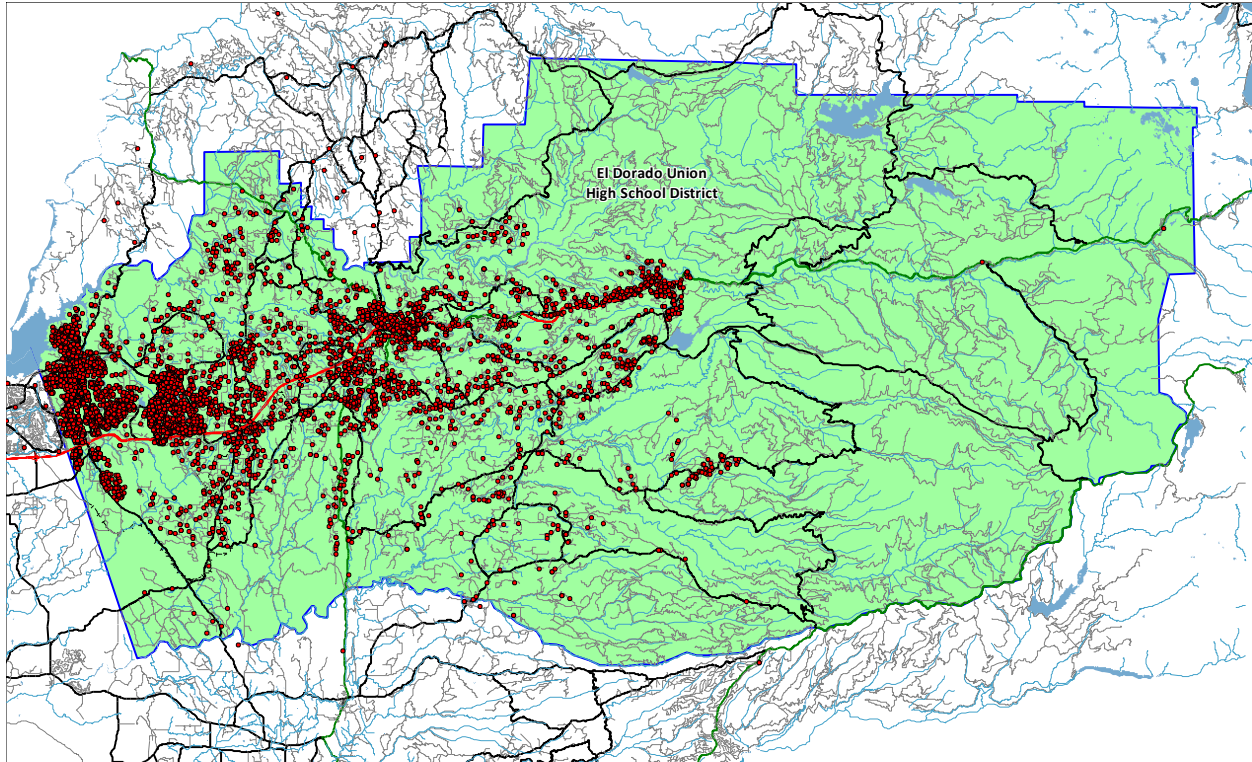
The cohort change factor indicates the change in the number of students for each grade compared to the number of students in the prior grade the previous year.

These projections assume the transfers between schools remain consistent. If changes in facilities, schedules, programs or policies are made, then the patterns may be impacted.

The students living in the boundary generate the cohort factors which are calculated for the past three (3) years and the weighted average is determined. Those cohorts are then used to determine the students who will be residing in each attendance area for the following years. Next the attendance factor is used to determine the net enrollment for each grade. The attendance factor is determined by analyzing the current year of students to see how many Inter- and Intra-district transfers there are.

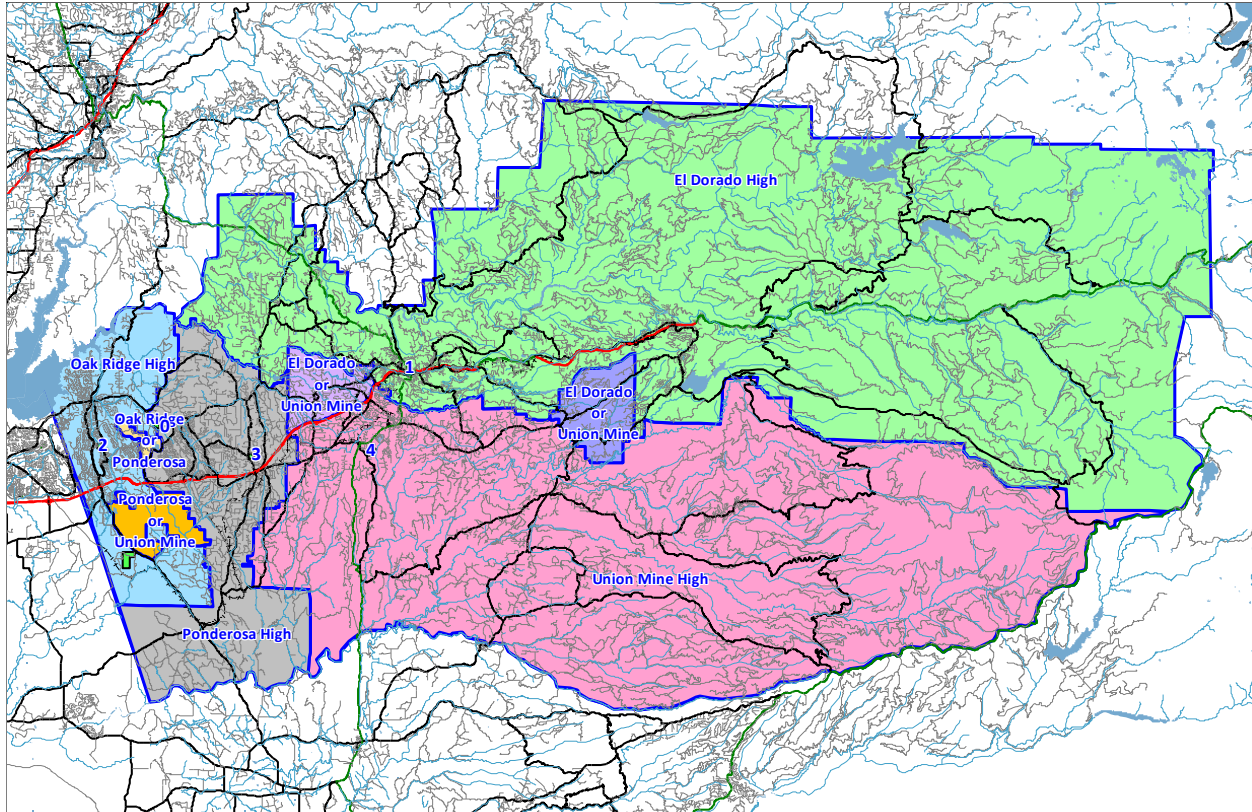


**District Map with Student Residential Locations**



This map shows the District boundary along with the location of each student based on their residential address. This geographic data is the foundation for our demographic analysis. Any red dots outside the District boundary will represent students attending one of the District schools or programs but have a residence outside the District. This map also identifies different areas of student population density.

**High School Boundaries and Comprehensive High School Locations**



<u>Id</u>	<u>School</u>	<u>Grades</u>	<u>Id</u>	<u>School</u>	<u>Grades</u>
1	El Dorado High	9-12	3	Ponderosa High	9-12
2	Oak Ridge High	9-12	4	Union Mine High	9-12

**Historic Enrollment and Trends**

<b>El Dorado Union High School District</b>								
<b>Historic Enrollment and Cohorts</b>								
<b>Grade</b>	<b>CalPADS Enrollment</b>				<b>Historic Cohorts</b>			<b>Weighted</b>
	<b>16/17</b>	<b>17/18</b>	<b>18/19</b>	<b>19/20</b>	<b>16 to 17</b>	<b>17 to 18</b>	<b>18 to 19</b>	<b>Average</b>
9	1,649	1,696	1,747	1,714				
10	1,600	1,645	1,713	1,707	-4	17	-40	-15.0
11	1,585	1,563	1,620	1,659	-37	-25	-54	-41.5
12	1,594	1,509	1,531	1,562	-76	-32	-58	-52.3
SDC/ISP	226	261	131	164	35	-130	33	-21.0
<b>Totals</b>	<b>6,654</b>	<b>6,674</b>	<b>6,742</b>	<b>6,806</b>	<b>-20.5</b>	<b>-42.5</b>	<b>-29.8</b>	<b>-32.5</b>
<b>Annual Change:</b>		20	68	64				

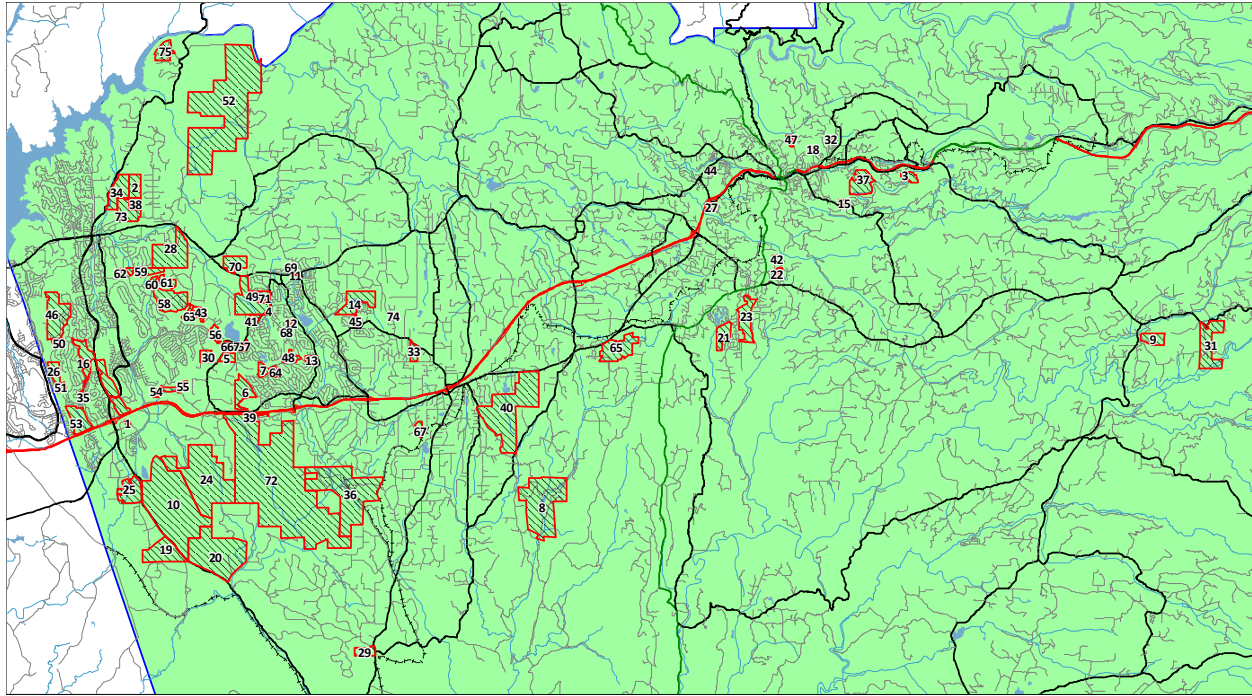
This chart shows the enrollment by grade level over the past four (4) years. The cohort values were calculated for each grade and each year, along with the weighted average for each grade. A positive cohort value indicates that grade is expected to have more students than the previous grade last year. A negative value would mean that the grade has fewer students compared to the previous grade last year.

In general, a positive cohort is representative of growth and a negative cohort indicates a decline in enrollment. There are some exceptions. First grade usually has a positive cohort, as there are some students that do not attend kindergarten at public schools but arrive in first grade.

Another important item to notice is the current breakdown by grade level of the student population. Comparing the number of students in the lower grades to the upper grades can indicate potential increases or decreases in future enrollments. Also, if there is a large class or a small class, it will slowly cause a ripple in the enrollments as it advances a grade each year.

Finally, the annual change at the bottom of this chart indicates the net impact of the changes in enrollment over the past few years.

**New Housing Developments**



This close up view of the District shows the location of the projected new development areas.

To determine the impact of the new housing development, each new housing unit is multiplied by the student yield rate. Currently the District student yield rate is 0.134 students per housing unit. This breaks down as follows:

**Student Yield Rate**

El Dorado Union High School District Student Yield Rate Analysis			
<u>Grade</u>	<u>2010 Students in District</u>	<u>2010 Housing Units</u>	<u>Student Yield Rate</u>
<b>Total 9-12</b>	6,966	51,928	0.134

Based on 2010 Census Data for school district.

The yield rate used for new construction eligibility determination in the State building program is 0.20 students per home for 9-12 districts. The yield rate in the El Dorado Union High School District is lower than the State average.



# El Dorado Union High School District Demographic Study DRAFT 2019/20

The projections used in this report are based on the following number of units projected from these developments:

ID	Name	Remaining	6 Year	Boundary	ID	Name	Remaining	6 Year	Boundary
		Units	Projection				Units	Projection	
1	AG Spanos	214	214	Oak Ridge	39	Marble Valley Ridge Estates	3	1	Ponderosa
2	Alto LLC	23	0	Oak Ridge	40	Mill Creek	633	0	Ponderosa
3	Astoria (Placerville Estates)	39	0	El Dorado	41	Oak View Estates	24	0	Ponderosa
4	Bass Lake Estates	36	12	Ponderosa	42	Piedmont Oak Estates	75	10	Union Mine
5	Bass Lake North	90	90	Ponderosa	43	Pinnacle at Serrano	2	2	Oak Ridge/Ponderosa
6	Bell Ranch	113	113	Ponderosa	44	Placerville Heritage Homes	20	0	El Dorado
7	Bell Woods	54	54	Ponderosa	45	Portico Estates	15	5	Ponderosa
8	Big Canyon Ranch	40	30	Union Mine	46	Promontory Villages	15	15	Oak Ridge
9	Blackhawk Estates	9	3	Union Mine	47	Quartz Mountain	22	12	El Dorado
10	Blackstone	30	30	Ponderosa/Union Mine	48	Rancho Tierra	83	40	Ponderosa
11	Cameron Glen	14	7	Ponderosa	49	Revere Silver Springs	244	220	Ponderosa
12	Cameron Heights	25	25	Ponderosa	50	Ridgeview Village #9	44	14	Oak Ridge
13	Cameron Hills	41	0	Ponderosa	51	Ridgeview West	12	6	Oak Ridge
14	Cameron Meadows	374	0	Ponderosa	52	Salmon Falls Preserve	375	0	Oak Ridge
15	Cedar Bluffs Phase 2 & 3	58	0	El Dorado	53	Saratoga Estates	317	317	Oak Ridge
16	Central EDHSP	1,000	250	Oak Ridge	54	Serrano Village A	54	54	Oak Ridge
17	Collina at Serrano	72	72	Oak Ridge/Ponderosa	55	Serrano Village C2	25	5	Oak Ridge
18	Cottonwood Park Phase 4&6	39	0	El Dorado	56	Serrano Village J Loth	41	41	Oak Ridge/Ponderosa
19	Creekside Village GPA	0	0	Oak Ridge	57	Serrano Village J7	65	60	Oak Ridge/Ponderosa
20	Deer Creek Estates	121	0	Ponderosa/Union Mine	58	Serrano Village K1/K2	5	5	Oak Ridge/Ponderosa
21	Diamond Dorado	744	0	Union Mine	59	Serrano Village M2	48	48	Oak Ridge
22	Diamond Springs Village Apartments	80	80	Union Mine	60	Serrano Village M3	28	28	Oak Ridge/Ponderosa
23	Dorado Oaks	381	0	Union Mine	61	Serrano Village M4	38	0	Oak Ridge/Ponderosa
24	East Ridge	701	450	Ponderosa/Union Mine	62	Serrano Village M5	10	0	Oak Ridge
25	El Dorado Hills Business Park	1,680	0	Oak Ridge	63	Serrano Villages K5 P2	41	41	Oak Ridge/Ponderosa
26	Elms & Oaks at the Promontory	2	2	Oak Ridge	64	Shady Glen Estates	22	22	Ponderosa
27	Forni Rd	34	0	Union Mine	65	Shinn Ranch Development	146	0	Union Mine
28	Generations at Green Valley	238	0	Oak Ridge	66	Sienna Ridge	74	74	Oak Ridge/Ponderosa
29	Hansen Project	4	0	Ponderosa	67	Sierra Gold Condos	91	40	Ponderosa
30	Hawk View	114	114	Oak Ridge/Ponderosa	68	Sierra Sunrise	28	28	Ponderosa
31	Hutton Hills Estates Preliminary	35	0	El Dorado/Union Mine	69	Starbuck Ranch	49	0	Ponderosa
32	Jewell Ridge Estates	17	0	El Dorado	70	Summer Brook Estates	29	10	Ponderosa
33	La Caille Estates	24	0	Ponderosa	71	Verde Vista	69	80	Ponderosa
34	La Canada	47	0	Oak Ridge	72	Village of Marble Valley SP	3,236	395	Ponderosa/Union Mine
35	La Cresta Woods	25	25	Oak Ridge	73	Vineyards at El Dorado	42	42	Oak Ridge
36	Lime Rock Valley Specific Plan	800	0	Ponderosa	74	Vista Grande Estate	5	1	Ponderosa
37	Lumsden Ranch	366	0	El Dorado	75	Watermark	17	6	Oak Ridge
38	Malcolm Dixon Road Estates	7	4	Oak Ridge		<b>Totals</b>	<b>13,738</b>	<b>3,197</b>	

Assuming that 3,197 of the 13,738 planned units are completed over a six (6) year period, there would be an average of 533 new housing units per year.

El Dorado Union High School District New Development Construction Housing Units per Year							
	20/21	21/22	22/23	23/24	24/25	25/26	Totals
School	Year 1	Year 2	Year 3	Year 4	Year 5	Year 6	
El Dorado High	2	2	2	2	2	2	12
Oak Ridge High	177	346	237	139	232	221	1,352
Ponderosa High	69	127	175	348	395	421	1,535
Union Mine High	6	5	64	70	65	88	298
<b>High Totals</b>	<b>254</b>	<b>480</b>	<b>478</b>	<b>559</b>	<b>694</b>	<b>732</b>	<b>3,197</b>

Based on these estimated construction rates, the development will generate 35 students next year and a total of 444 students in the next six (6) years.

### **Classroom Counts and Capacity**

It is important to understand that capacity and classroom counts may be viewed different ways for different purposes. The State School Facilities Program (SFP) considers all available teaching stations excluding physical education facilities and core facilities (e.g., libraries, multipurpose rooms, and administrative spaces), as part of the site capacity when calculating eligibility for new construction or modernization funding. The State also has its own loading standards per classroom as part of the eligibility determinations.

Another method for calculating capacity and number of classrooms is based on local District standards of class size and a definition of what is considered a full day teaching station. The District may set aside several classroom spaces defined by the SFP for specialized programs or pull-out spaces.

The classroom counts and capacities defined in this Demographic Study represent the rooms that have been identified by El Dorado Union High School District administration as designated fulltime teaching stations. This count is a net count and may not take into consideration other rooms which could be used as fulltime teaching stations but are needed for other programs offered by the District.

The classroom counts are shown for each school and are used to determine the capacity. The classroom counts represent the rooms that can be used for teaching purposes at each school site. The classroom counts may not represent the current classrooms being used, as there may be unused rooms on the school site. In some cases, there may be fewer classrooms counted than current teaching stations if some of the rooms being used were designed for other purposes but are currently being used as classrooms due to overcrowding.

**School Projections**

This Study provides a detailed analysis of student attendance patterns and enrollment for each school. This includes a boundary map illustrating that particular school’s attendance patterns along with a chart showing the projected enrollment for the next six (6) years. These charts indicate the actual enrollment at each school over the past four (4) years along with the projected enrollment for the next six (6) years. In addition, the number of students living in the boundary are shown for the same time period. If there are more students attending than live in the area, then there is a net inflow. If more students live in the boundary than attend the school, then there is a net outflow.

The current capacity is shown on these charts to identify if there will be classroom space available for the students. If space is not available, then the attendance patterns will likely need to change if the additional facilities are not provided. The capacity for each school was determined by using the following loading standards for each classroom identified:

<u>Grade</u>	<u>Loading Standard</u>	<u>Grade</u>	<u>Loading Standard</u>
9-12	27.5	SVA	22
CHS	25	CDC	12

These loading standards are based on the current loading factors used this year and may change based on the level of funding for schools in the future.

**Loading Standard Analysis**

<u>School year(s)</u>	<u>Student/teacher ratio</u>	<u>Class load factor</u>	<u>Class load %</u>	<u>Leeway factor</u>
Pre 2008/09	30 to 1	27 to 1	90%	10%
2008/09-2012/13	32 to 1	27 to 1	84%	16%
2013/14*	31.57	27.5 to 1	87%	13%

\*Formula to determine class load factor based on student/teacher ratio:  
 Student/teacher ratio times class load percentage equals class load factor (31.57 X 87% = 27.5)

The number of students living in the boundary are shown, which are then used to generate the cohort factors. The weighted average of the three (3) years was determined with the current year weighted 50%, the prior year 33.3% and the last year 16.7%. This gives the current trends more value in determining the projections. Those cohorts are then used to determine the students who will be residing in each attendance area for the following years. The kindergarten enrollment is projected using the birth data instead of the cohort factor shown here.

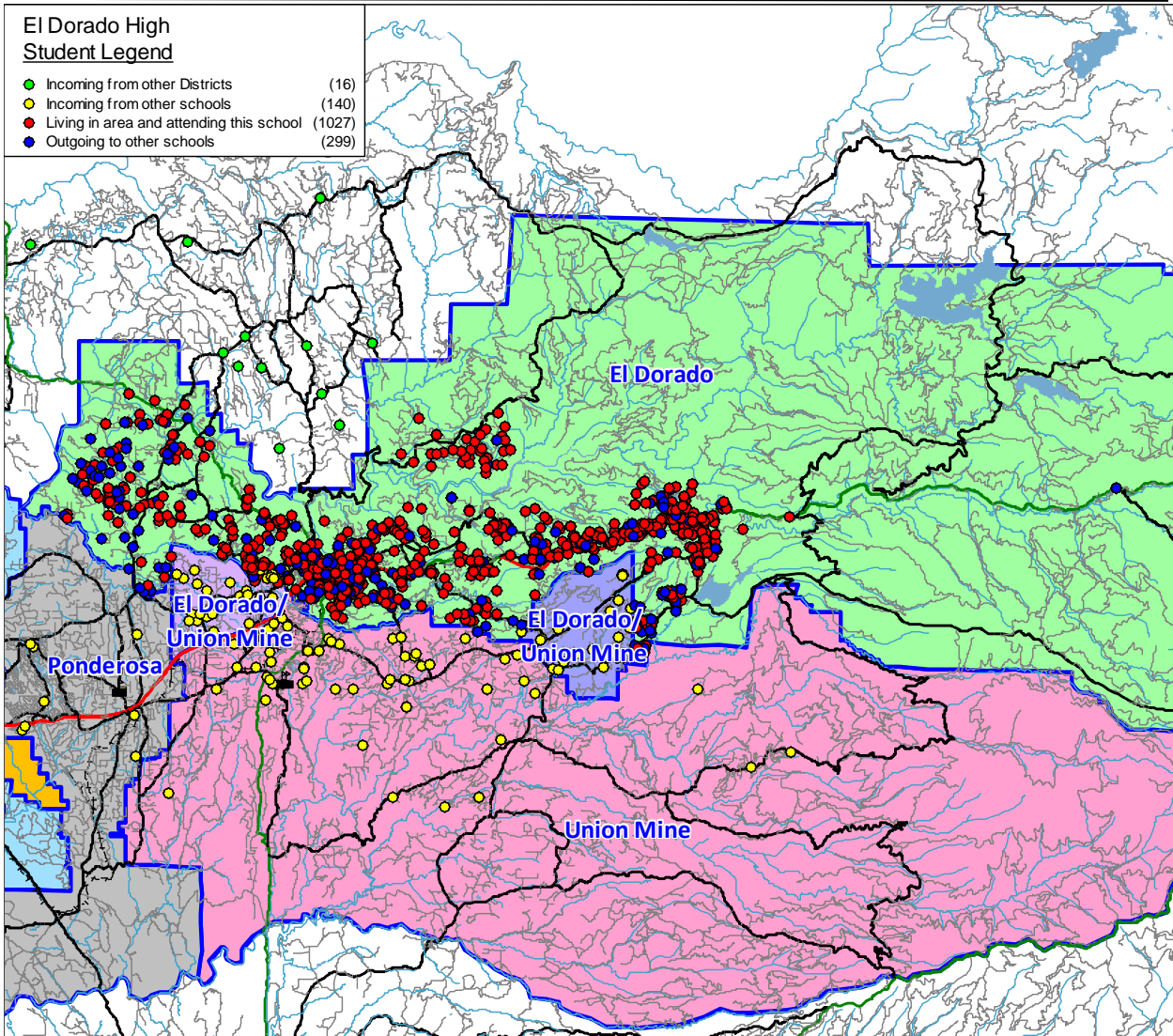
Backup data is provided below each projection chart that shows the calculations of the cohort factors used to determine the enrollment projections for each school. The Attendance Factors were determined by analyzing the current year of students to see how many Inter- and Intra-District transfers there are. Once the baseline projections are calculated for the residents in the attendance area, the Intra-District and Inter-District factors are applied to determine the projected enrollment for each school.

The last three (3) columns in the chart, Current Enrollment, 20/21 Projection, and Net Change, show the current enrollment, next year’s projection and net change in enrollment for next year. These are compared by grade to show the details needed for staffing and classroom needs.

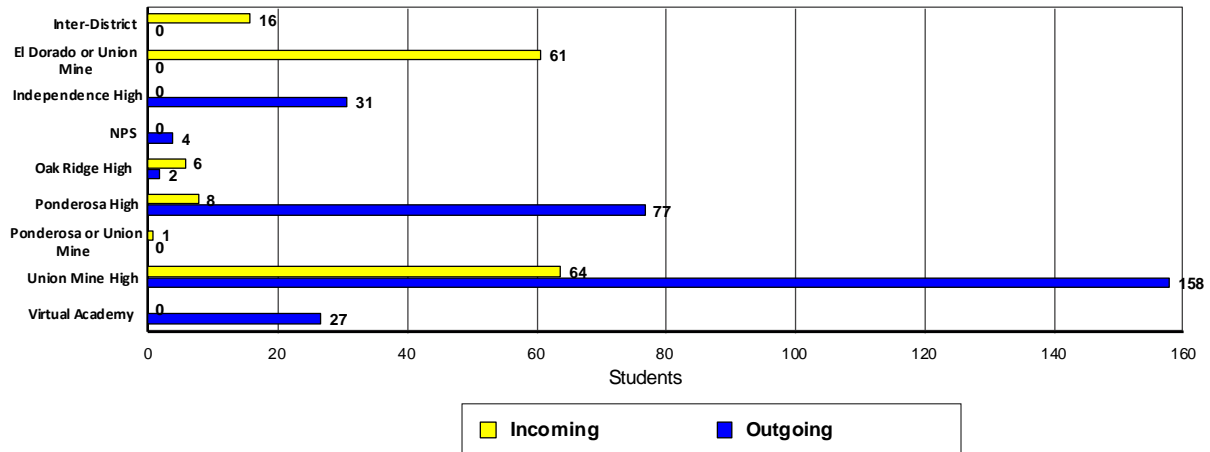
# El Dorado Union High School District Demographic Study DRAFT 2019/20

## El Dorado High Student Legend

- Incoming from other Districts (16)
- Incoming from other schools (140)
- Living in area and attending this school (1027)
- Outgoing to other schools (299)



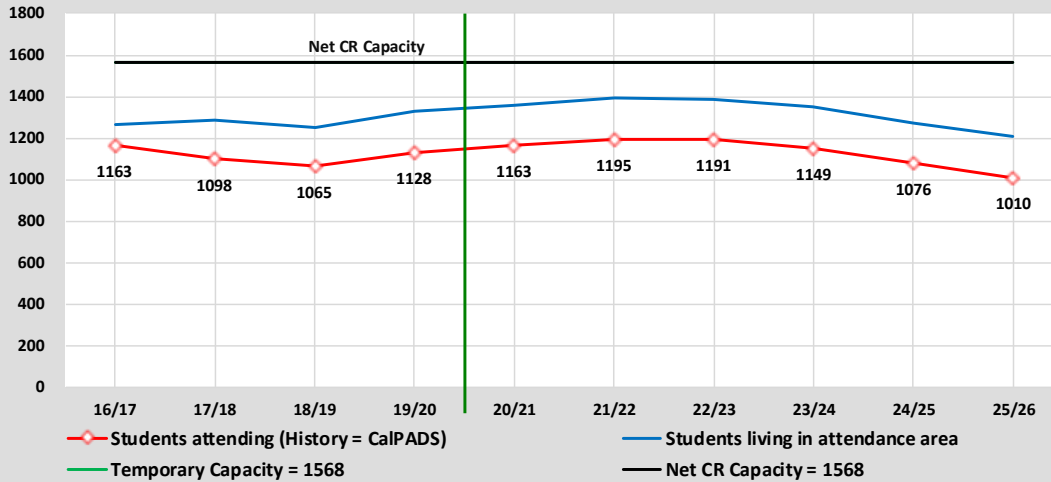
## El Dorado High Transfer Students





# El Dorado Union High School District Demographic Study DRAFT 2019/20

## Capacity & Projected Enrollment El Dorado High



District Loading Standards  
Traditional School  
All Portables Loaded  
Net Classroom Count = 57  
Grades Served = 9 - 12

### Classroom Needs Timeline

Year	Total Students*	Annual Change	Spec. Ed. Students	Net CR Capacity	Unhoused Students	Annual CR Needed	Total CR's Needed	Available Seats	Projected Housing Units
19/20	1128	63	0	1568	0	0	-16	440	
20/21	1163	35	0	1568	0	0	-15	405	2
21/22	1195	32	0	1568	0	0	-14	373	2
22/23	1191	-4	0	1568	0	0	-14	377	2
23/24	1149	-42	0	1568	0	0	-15	419	2
24/25	1076	-73	0	1568	0	0	-18	492	2
25/26	1010	-66	0	1568	0	0	-20	558	2

\* Based on Students Attending (Squares on Graph)  
Net Classroom Count = 57

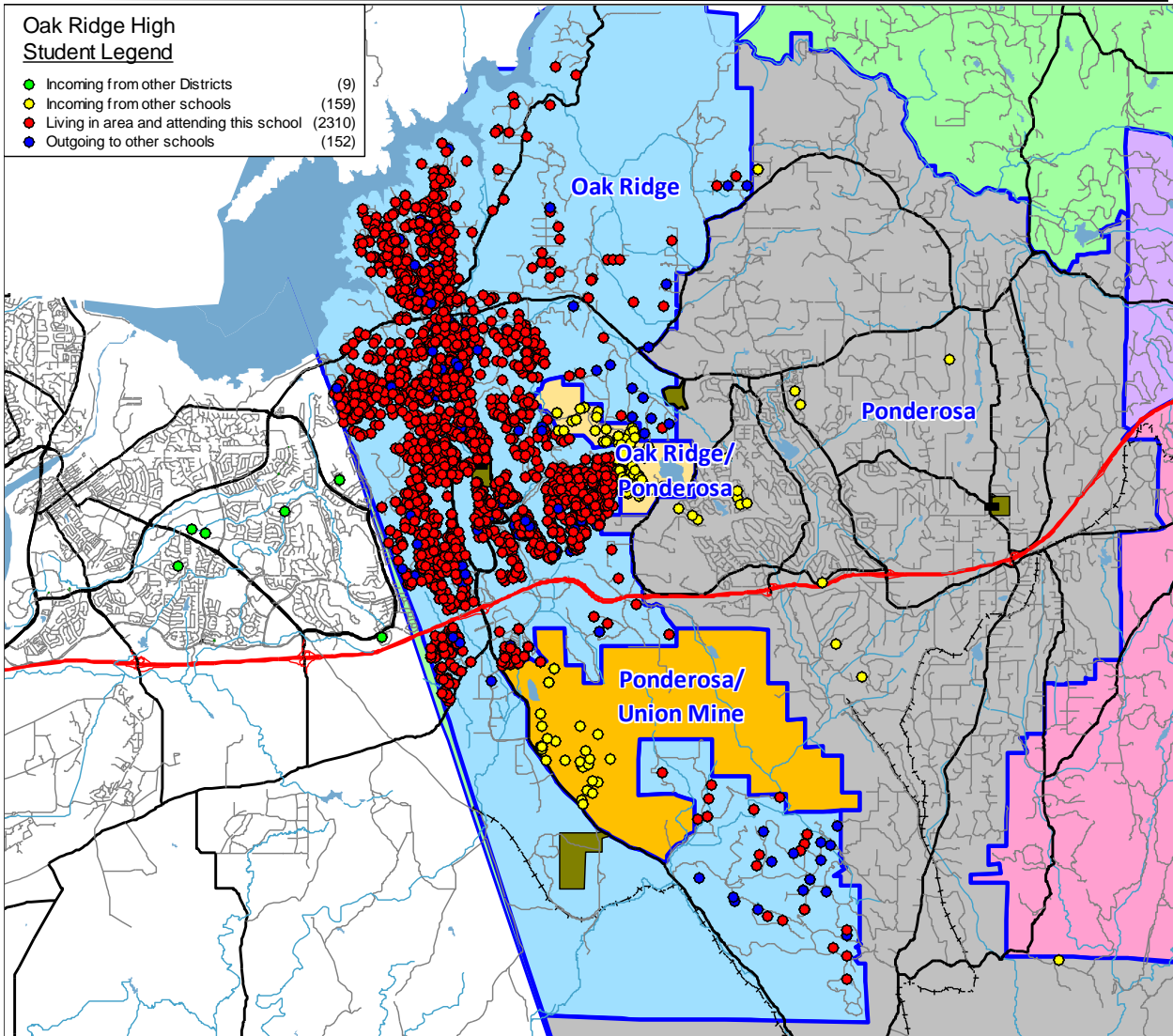
### El Dorado High

YEAR: Grade	Students in boundary				Historic Cohorts			Weighted Average	Attendance Factors		Current Enrollment	20/21 Projection	Net Change
	16/17	17/18	18/19	19/20	16 to 17	17 to 18	18 to 19		Intra	Inter			
K	374	369	356	371	-5	-13	15	0	0.0%	0.0%	0	0	0
1	299	313	311	292	-61	-58	-64	-31	0.0%	0.0%	0	0	0
2	317	306	303	317	7	-10	6	1	0.0%	0.0%	0	0	0
3	337	308	307	296	-9	1	-7	-5	0.0%	0.0%	0	0	0
4	358	338	304	301	1	-4	-6	-4	0.0%	0.0%	0	0	0
5	361	358	326	304	0	-12	0	-4	0.0%	0.0%	0	0	0
6	335	358	355	317	-3	-3	-9	-6	0.0%	0.0%	0	0	0
7	303	330	349	333	-5	-9	-22	-15	0.0%	0.0%	0	0	0
8	306	297	339	354	-6	9	5	5	0.0%	0.0%	0	0	0
9	325	318	326	345	12	29	6	15	-9.0%	1.2%	318	342	24
10	303	338	319	331	13	1	5	5	-14.5%	0.6%	285	304	19
11	335	294	317	315	-9	-21	-4	-11	-11.1%	1.3%	284	289	5
12	299	338	286	335	3	-8	18	7	-29.9%	1.8%	241	228	-13
<b>Totals</b>	<b>4252</b>	<b>4265</b>	<b>4198</b>	<b>4211</b>	<b>-4.8</b>	<b>-7.5</b>	<b>-4.4</b>	<b>-3.3</b>	<b>-16.1%</b>	<b>1.2%</b>	<b>1128</b>	<b>1163</b>	<b>35</b>

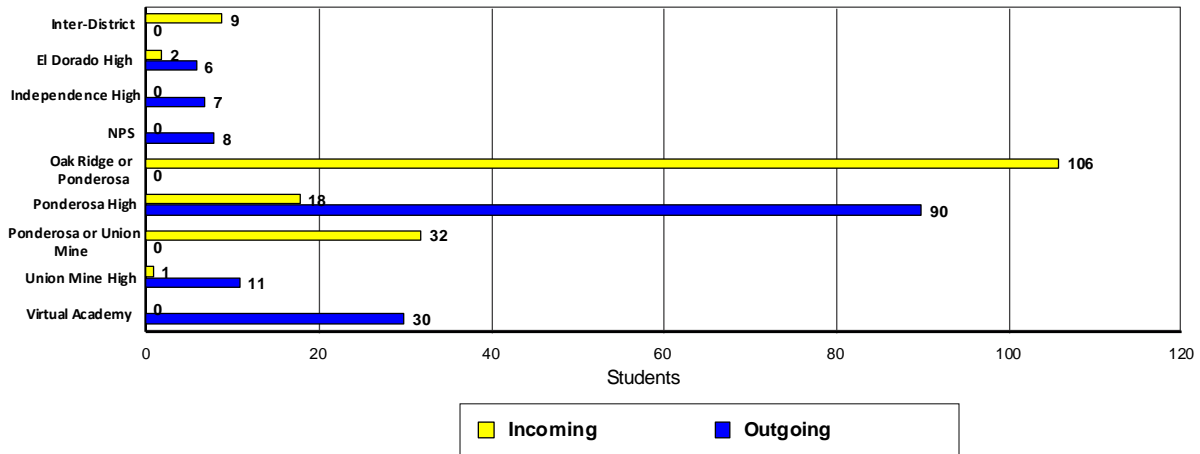
# El Dorado Union High School District Demographic Study DRAFT 2019/20

## Oak Ridge High Student Legend

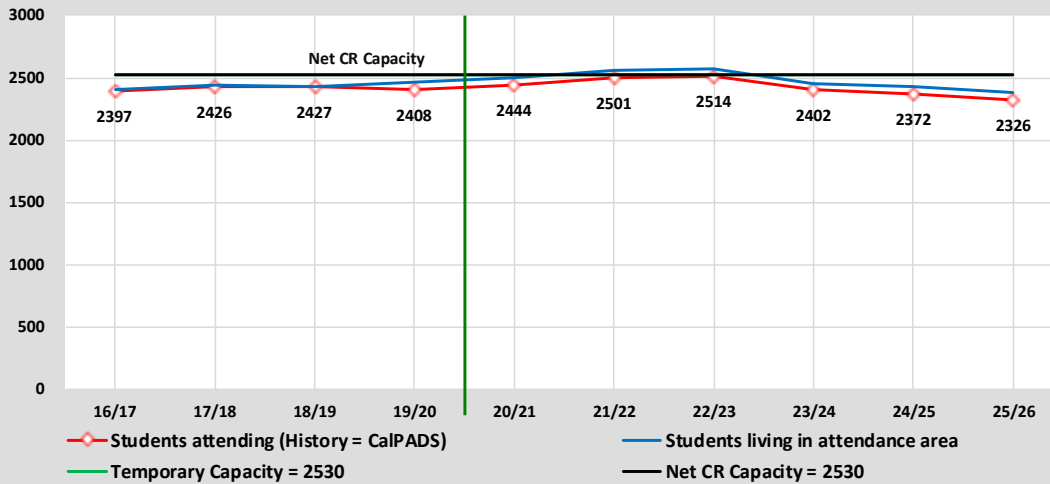
- Incoming from other Districts (9)
- Incoming from other schools (159)
- Living in area and attending this school (2310)
- Outgoing to other schools (152)



## Oak Ridge High Transfer Students



**Capacity & Projected Enrollment**  
**Oak Ridge High**



District Loading Standards  
 Traditional School  
 All Portables Loaded  
 Net Classroom Count = 92  
 Grades Served = 9 - 12

**Classroom Needs Timeline**

Year	Total Students*	Annual Change	Spec. Ed. Students	Net CR Capacity	Unhoused Students	Annual CR Needed	Total CR's Needed	Available Seats	Projected Housing Units
19/20	2408	-19	0	2530	0	0	-4	122	
20/21	2444	36	0	2530	0	0	-3	86	177
21/22	2501	57	0	2530	0	0	-1	29	346
22/23	2514	13	0	2530	0	0	-1	16	237
23/24	2402	-112	0	2530	0	0	-5	128	139
24/25	2372	-30	0	2530	0	0	-6	158	232
25/26	2326	-46	0	2530	0	0	-7	204	221

\* Based on Students Attending (Squares on Graph)  
 Net Classroom Count = 92

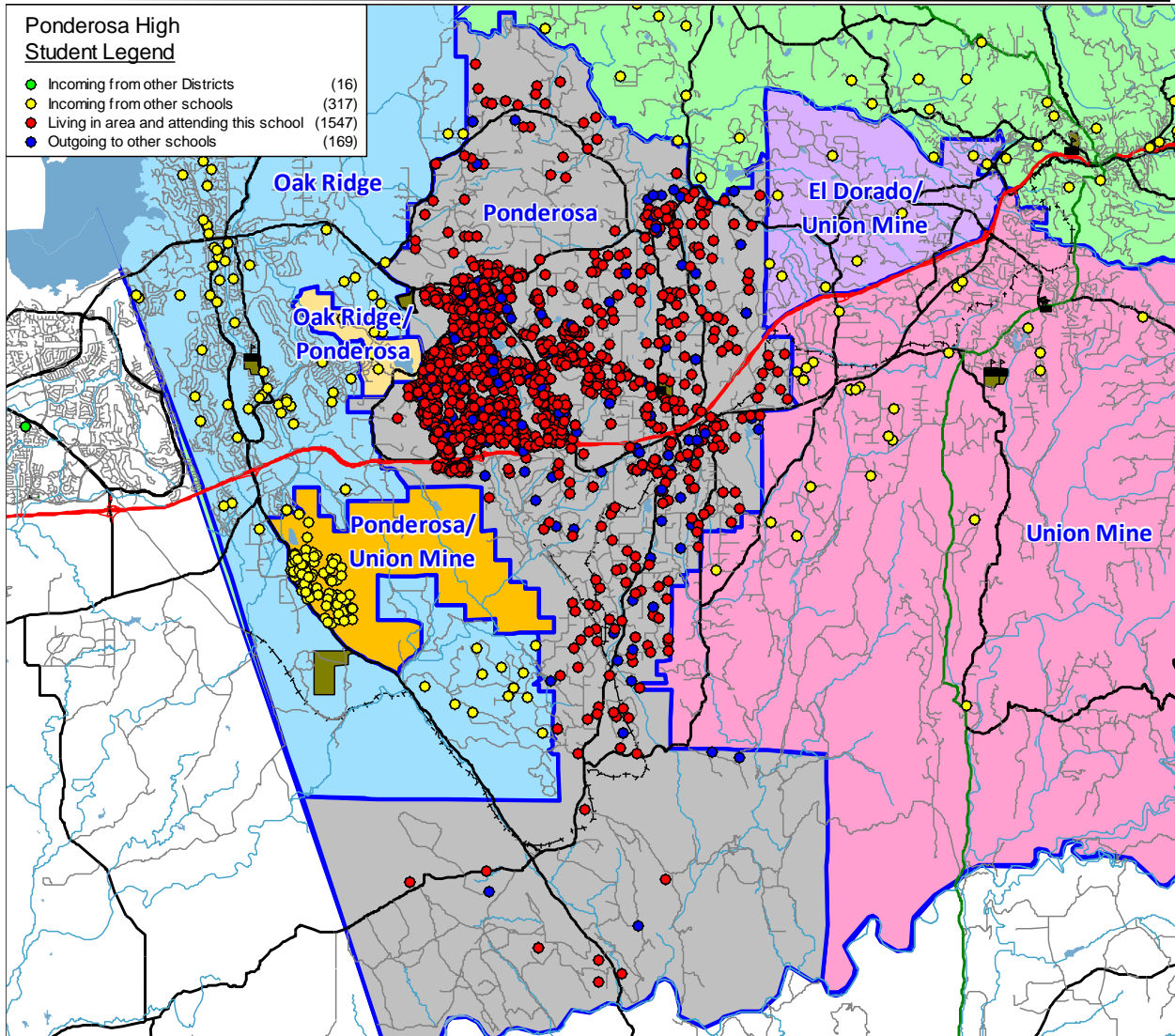
**Oak Ridge High**

YEAR:	Students in boundary				Historic Cohorts			Weighted Average	Attendance Factors		Current Enrollment	20/21 Projection	Net Change
	16/17	17/18	18/19	19/20	16 to 17	17 to 18	18 to 19		Intra	Inter			
Grade													
K	532	456	503	450	-76	47	-53	0	0.0%	0.0%	0	0	0
1	367	429	389	432	-103	-67	-71	-38	0.0%	0.0%	0	0	0
2	441	446	457	416	79	28	27	36	0.0%	0.0%	0	0	0
3	500	416	489	483	-25	43	26	23	0.0%	0.0%	0	0	0
4	530	500	435	506	0	19	17	15	0.0%	0.0%	0	0	0
5	586	567	531	434	37	31	-1	16	0.0%	0.0%	0	0	0
6	540	582	598	550	-4	31	19	19	0.0%	0.0%	0	0	0
7	582	583	602	607	43	20	9	18	0.0%	0.0%	0	0	0
8	611	600	585	616	18	2	14	11	0.0%	0.0%	0	0	0
9	615	646	619	633	35	19	48	36	-0.8%	0.3%	630	652	22
10	606	618	628	614	3	-18	-5	-8	-1.1%	0.2%	608	621	13
11	577	610	597	620	4	-21	-8	-10	-4.7%	0.5%	594	580	-14
12	610	570	582	595	-7	-28	-2	-12	-3.7%	0.5%	576	591	15
<b>Totals</b>	<b>7097</b>	<b>7023</b>	<b>7015</b>	<b>6956</b>	<b>0.3</b>	<b>8.2</b>	<b>1.5</b>	<b>8.2</b>	<b>-2.6%</b>	<b>0.4%</b>	<b>2408</b>	<b>2444</b>	<b>36</b>

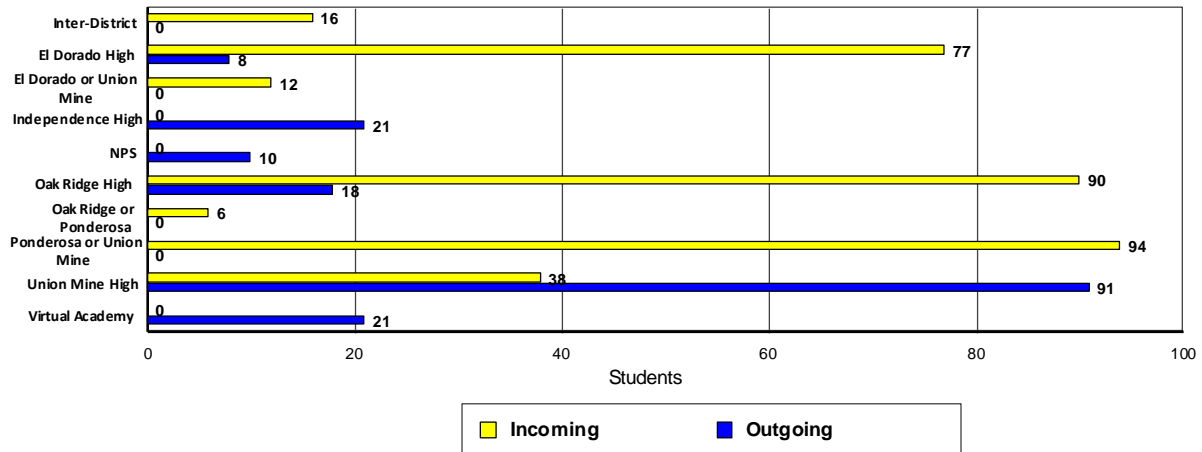
# El Dorado Union High School District Demographic Study DRAFT 2019/20

## Ponderosa High Student Legend

- Incoming from other Districts (16)
- Incoming from other schools (317)
- Living in area and attending this school (1547)
- Outgoing to other schools (169)

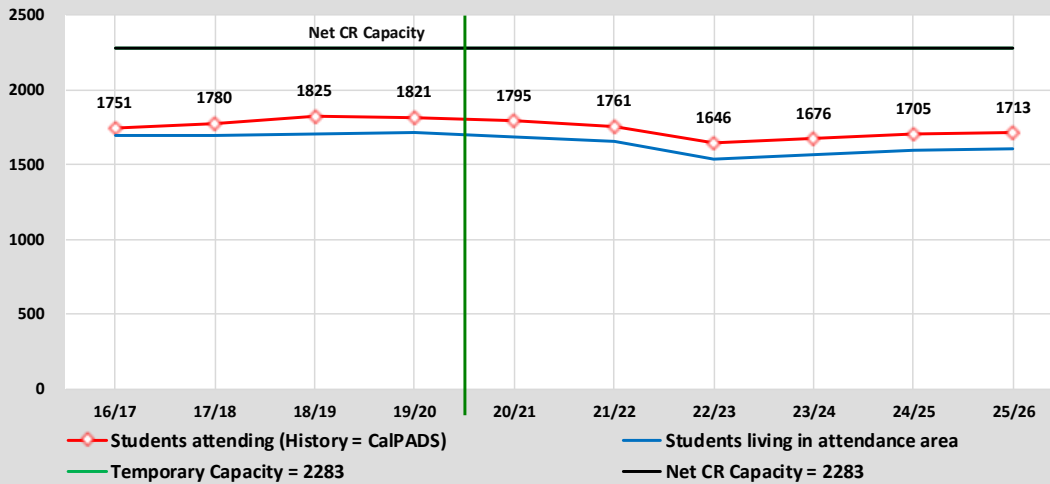


## Ponderosa High Transfer Students



**El Dorado Union High School District**  
**Demographic Study**  
**DRAFT 2019/20**

**Capacity & Projected Enrollment**  
**Ponderosa High**



District Loading Standards  
 Traditional School  
 All Portables Loaded  
 Net Classroom Count = 83  
 Grades Served = 9 - 12

**Classroom Needs Timeline**

Year	Total Students*	Annual Change	Spec. Ed. Students	Net CR Capacity	Unhoused Students	Annual CR Needed	Total CR's Needed	Available Seats	Projected Housing Units
19/20	1821	-4	0	2283	0	0	-17	462	
20/21	1795	-26	0	2283	0	0	-18	488	69
21/22	1761	-34	0	2283	0	0	-19	522	127
22/23	1646	-115	0	2283	0	0	-23	637	175
23/24	1676	30	0	2283	0	0	-22	607	348
24/25	1705	29	0	2283	0	0	-21	578	395
25/26	1713	8	0	2283	0	0	-21	570	421

\* Based on Students Attending (Squares on Graph)  
 Net Classroom Count = 83

**Ponderosa High**

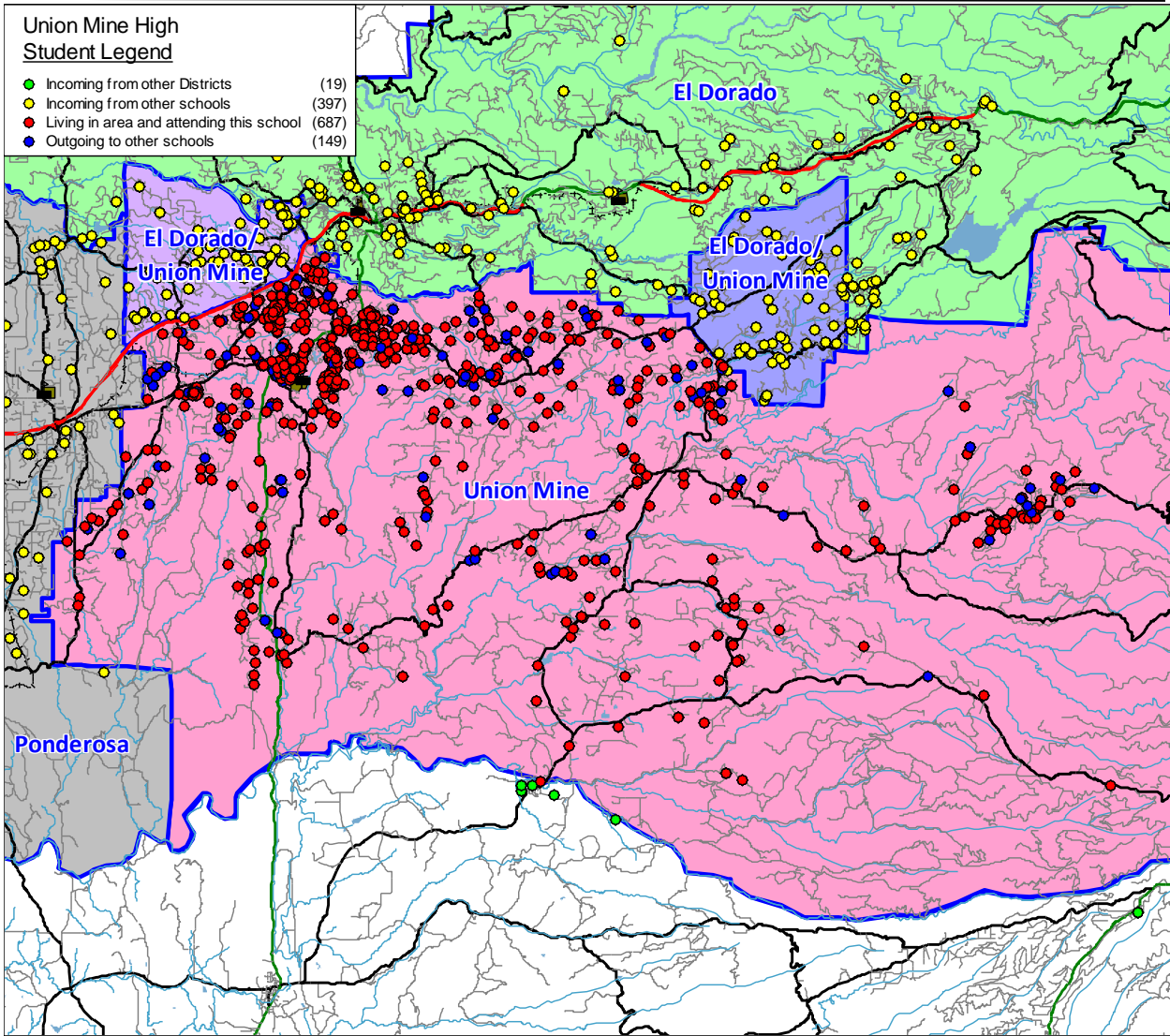
YEAR: Grade	Students in boundary				Historic Cohorts			Weighted Average	Attendance Factors		Current Enrollment	20/21 Projection	Net Change
	16/17	17/18	18/19	19/20	16 to 17	17 to 18	18 to 19		Intra	Inter			
K	365	362	384	354	-3	22	-30	0	0.0%	0.0%	0	0	0
1	316	309	282	325	-56	-80	-59	-33	0.0%	0.0%	0	0	0
2	307	325	319	289	9	10	7	8	0.0%	0.0%	0	0	0
3	340	332	319	313	25	-6	-6	-1	0.0%	0.0%	0	0	0
4	337	296	327	320	-44	-5	1	-9	0.0%	0.0%	0	0	0
5	385	347	301	340	10	5	13	10	0.0%	0.0%	0	0	0
6	379	348	357	286	-37	10	-15	-10	0.0%	0.0%	0	0	0
7	414	353	356	360	-26	8	3	0	0.0%	0.0%	0	0	0
8	407	428	348	349	14	-5	-7	-3	0.0%	0.0%	0	0	0
9	443	461	461	401	54	33	53	47	11.7%	0.2%	449	445	-4
10	392	423	441	459	-20	-20	-2	-11	6.1%	1.3%	493	426	-67
11	426	404	417	448	12	-6	7	4	3.8%	0.9%	469	485	16
12	438	413	389	408	-13	-15	-9	-12	-0.7%	1.2%	410	439	29
<b>Totals</b>	<b>4949</b>	<b>4801</b>	<b>4701</b>	<b>4652</b>	<b>-5.8</b>	<b>-3.8</b>	<b>-3.4</b>	<b>-0.8</b>	<b>5.2%</b>	<b>0.9%</b>	<b>1821</b>	<b>1795</b>	<b>-26</b>



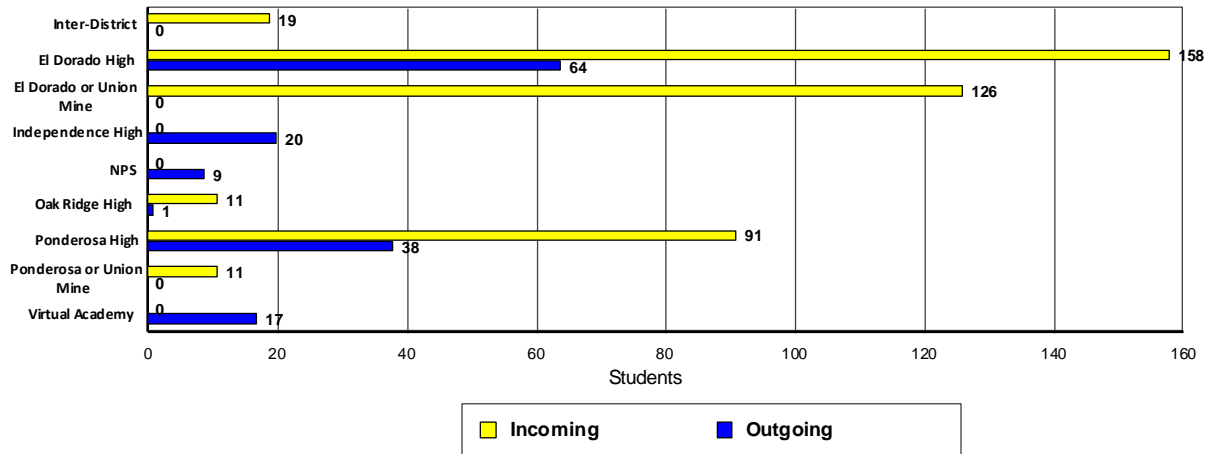
# El Dorado Union High School District Demographic Study DRAFT 2019/20

## Union Mine High Student Legend

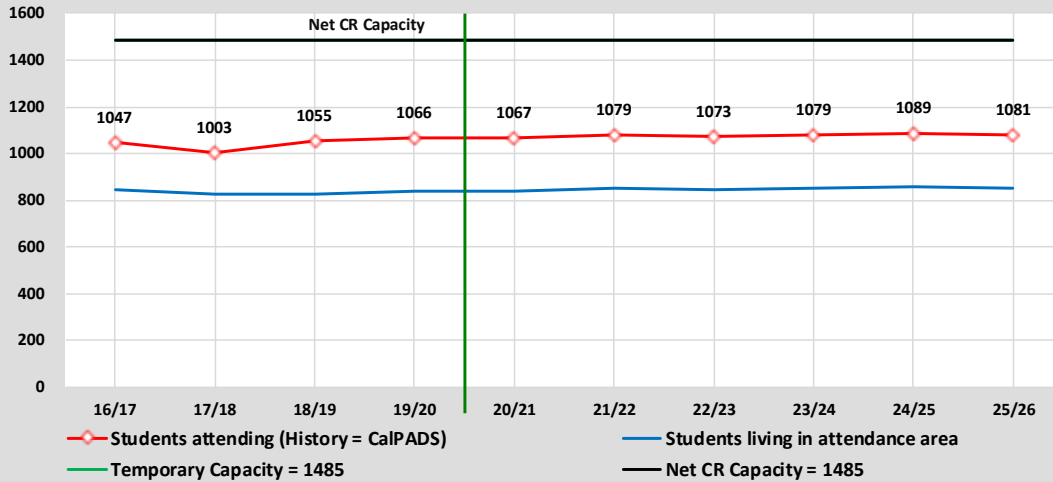
- Incoming from other Districts (19)
- Incoming from other schools (397)
- Living in area and attending this school (687)
- Outgoing to other schools (149)



## Union Mine High Transfer Students



**Capacity & Projected Enrollment**  
**Union Mine High**



District Loading Standards  
 Traditional School  
 All Portables Loaded  
 Net Classroom Count = 54  
 Grades Served = 9 - 12

**Classroom Needs Timeline**

Year	Total Students*	Annual Change	Spec. Ed. Students	Net CR Capacity	Unhoused Students	Annual CR Needed	Total CR's Needed	Available Seats	Projected Housing Units
19/20	1066	11	0	1485	0	0	-15	419	
20/21	1067	1	0	1485	0	0	-15	418	6
21/22	1079	12	0	1485	0	0	-15	406	5
22/23	1073	-6	0	1485	0	0	-15	412	64
23/24	1079	6	0	1485	0	0	-15	406	70
24/25	1089	10	0	1485	0	0	-14	396	65
25/26	1081	-8	0	1485	0	0	-15	404	88

\* Based on Students Attending (Squares on Graph)  
 Net Classroom Count = 54

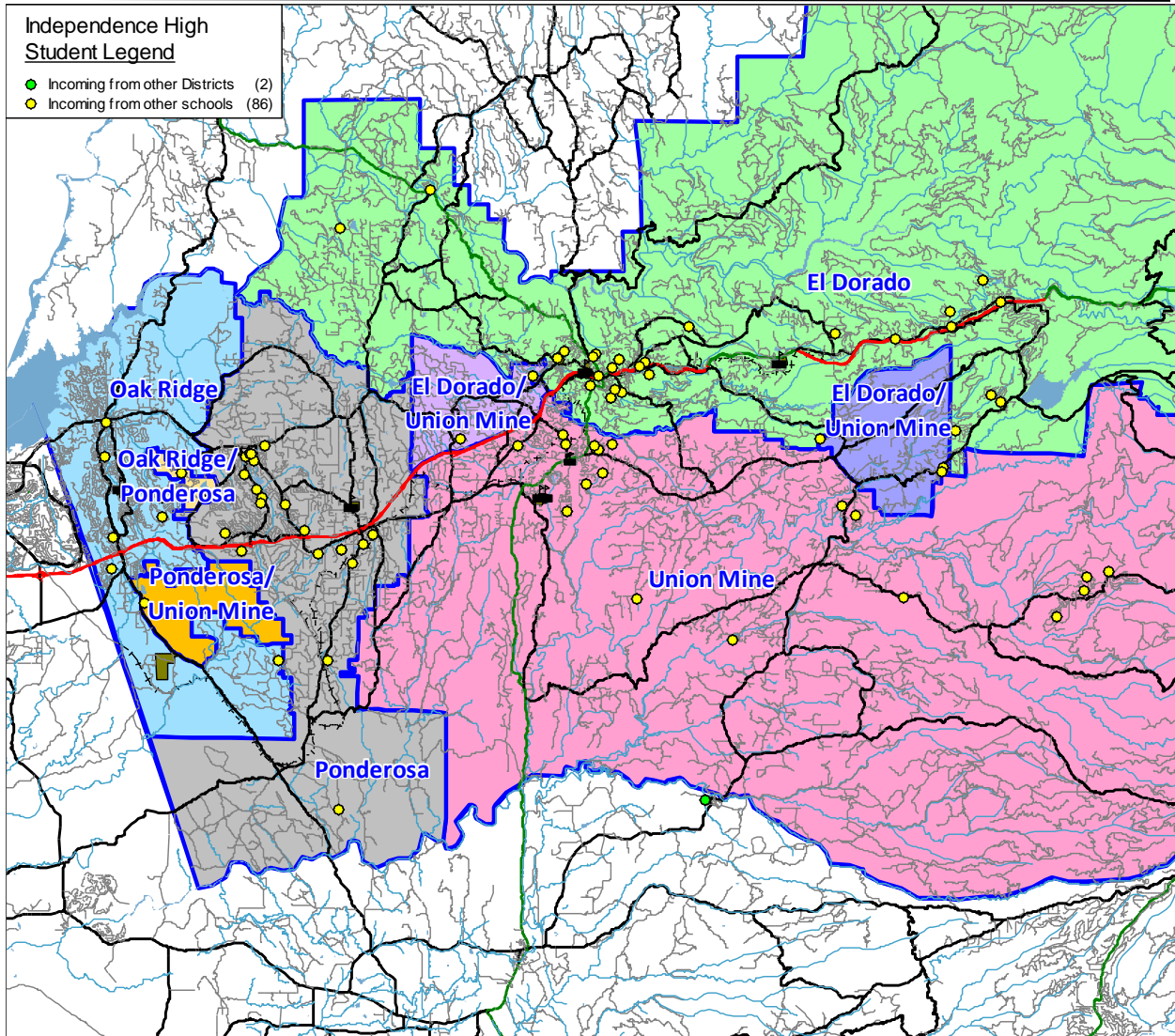
**Union Mine High**

YEAR:	Students in boundary				Historic Cohorts			Weighted Average	Attendance Factors		Current Enrollment	20/21 Projection	Net Change
	16/17	17/18	18/19	19/20	16 to 17	17 to 18	18 to 19		Intra	Inter			
Grade K	215	235	215	218	20	-20	3	0	0.0%	0.0%	0	0	0
1	176	164	158	180	-51	-77	-35	-26	0.0%	0.0%	0	0	0
2	175	172	164	180	-4	0	22	10	0.0%	0.0%	0	0	0
3	174	191	161	164	16	-11	0	-1	0.0%	0.0%	0	0	0
4	179	179	196	184	5	5	23	14	0.0%	0.0%	0	0	0
5	219	184	180	198	5	1	2	2	0.0%	0.0%	0	0	0
6	187	201	185	181	-18	1	1	-2	0.0%	0.0%	0	0	0
7	195	174	194	197	-13	-7	12	2	0.0%	0.0%	0	0	0
8	169	201	181	172	6	7	-22	-8	0.0%	0.0%	0	0	0
9	185	204	217	221	35	16	40	31	27.1%	2.7%	287	268	-19
10	237	182	208	216	-3	4	-1	0	30.6%	3.2%	289	293	4
11	198	234	188	203	-3	6	-5	-1	23.6%	1.0%	253	264	11
12	227	208	215	196	10	-19	8	-1	18.9%	2.0%	237	242	5
<b>Totals</b>	<b>2536</b>	<b>2529</b>	<b>2462</b>	<b>2510</b>	<b>0.4</b>	<b>-7.2</b>	<b>3.7</b>	<b>1.5</b>	<b>25.1%</b>	<b>2.2%</b>	<b>1066</b>	<b>1067</b>	<b>1</b>

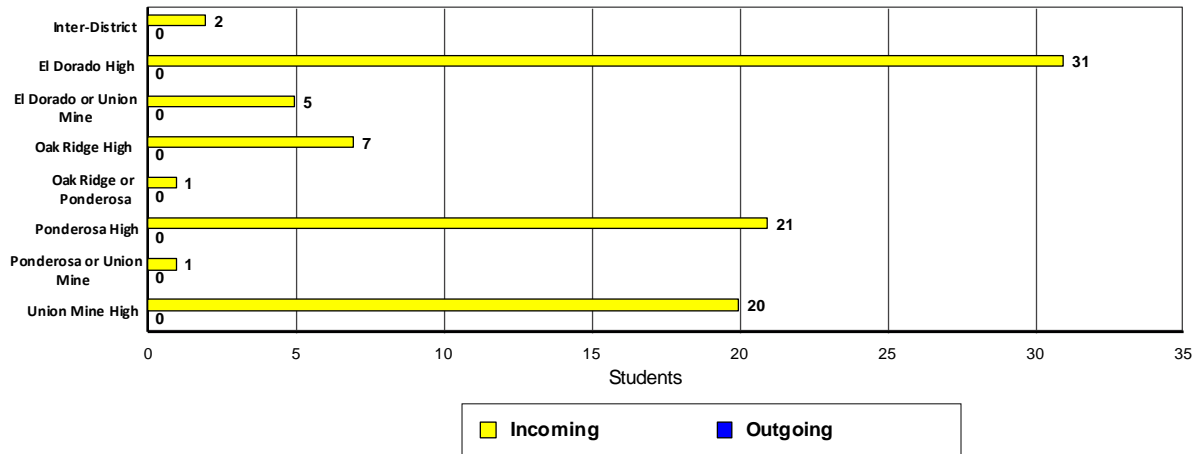
# El Dorado Union High School District Demographic Study DRAFT 2019/20

## Independence High Student Legend

- Incoming from other Districts (2)
- Incoming from other schools (86)

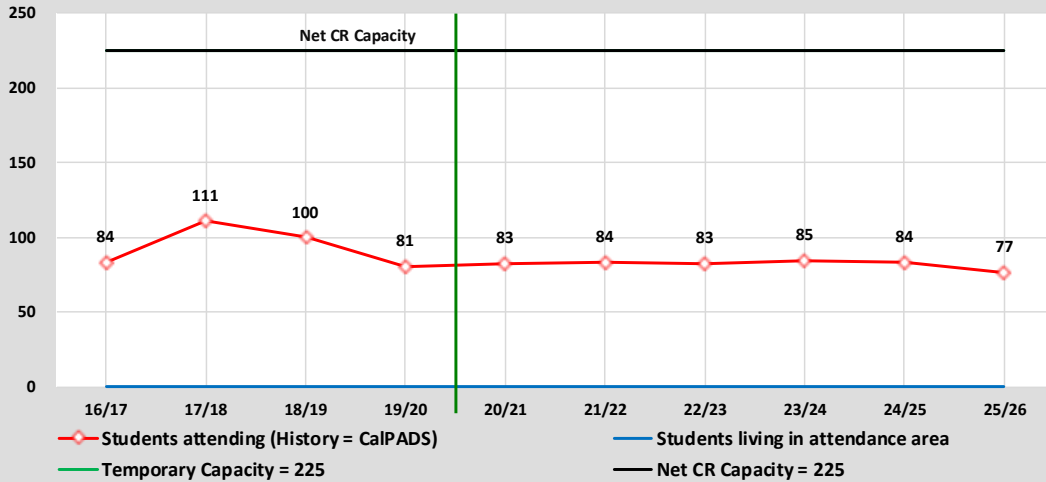


## Independence High Transfer Students





**Capacity & Projected Enrollment**  
**Independence High**



District Loading Standards  
 Traditional School  
 All Portables Loaded  
 Net Classroom Count = 9  
 Grades Served = 9 - 12

**Classroom Needs Timeline**

Year	Total Students*	Annual Change	Spec. Ed. Students	Net CR Capacity	Unhoused Students	Annual CR Needed	Total CR's Needed	Available Seats	Projected Housing Units
19/20	81	-19	0	225	0	0	-6	144	
20/21	83	2	0	225	0	0	-6	142	254
21/22	84	1	0	225	0	0	-6	141	480
22/23	83	-1	0	225	0	0	-6	142	478
23/24	85	2	0	225	0	0	-6	140	559
24/25	84	-1	0	225	0	0	-6	141	694
25/26	77	-7	0	225	0	0	-6	148	732

\* Based on Students Attending (Squares on Graph)  
 Net Classroom Count = 9

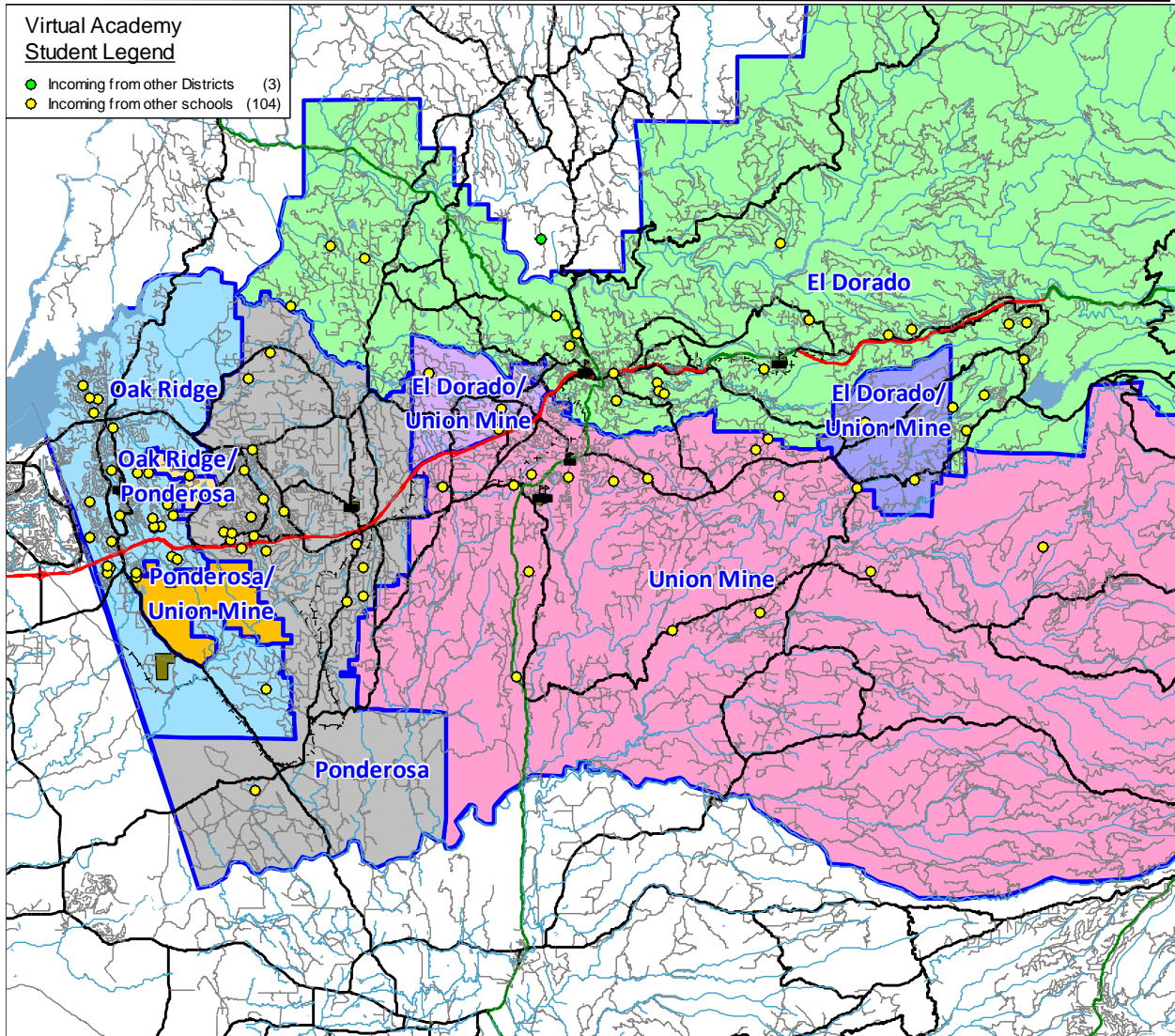
**Independence High**

YEAR:	Students in boundary				Historic Cohorts			Weighted Average	Attendance Factors		Current Enrollment	20/21 Projection	Net Change
	16/17	17/18	18/19	19/20	16 to 17	17 to 18	18 to 19		Intra	Inter			
Grade K	1486	1422	1458	1393	-64	36	-65	0	0.0%	0.0%	0	0	0
1	1158	1215	1140	1229	-271	-282	-229	-127	0.0%	0.0%	0	0	0
2	1240	1249	1243	1202	91	28	62	56	0.0%	0.0%	0	0	0
3	1351	1247	1276	1256	7	27	13	17	0.0%	0.0%	0	0	0
4	1404	1313	1262	1311	-38	15	35	16	0.0%	0.0%	0	0	0
5	1551	1456	1338	1276	52	25	14	24	0.0%	0.0%	0	0	0
6	1441	1489	1495	1334	-62	39	-4	1	0.0%	0.0%	0	0	0
7	1494	1440	1501	1497	-1	12	2	5	0.0%	0.0%	0	0	0
8	1493	1526	1453	1491	32	13	-10	5	0.0%	0.0%	0	0	0
9	1568	1629	1623	1600	136	97	147	129	0.0%	0.0%	0	0	0
10	1538	1561	1596	1620	-7	-33	-3	-14	0.0%	0.0%	0	0	0
11	1536	1542	1519	1586	4	-42	-10	-18	0.0%	1.4%	22	22	0
12	1574	1529	1472	1534	-7	-70	15	-17	-0.5%	4.3%	59	61	2
<b>Totals</b>	<b>18834</b>	<b>18618</b>	<b>18376</b>	<b>18329</b>	<b>-9.8</b>	<b>-10.4</b>	<b>-2.5</b>	<b>5.9</b>	<b>-0.2%</b>	<b>2.8%</b>	<b>81</b>	<b>83</b>	<b>2</b>

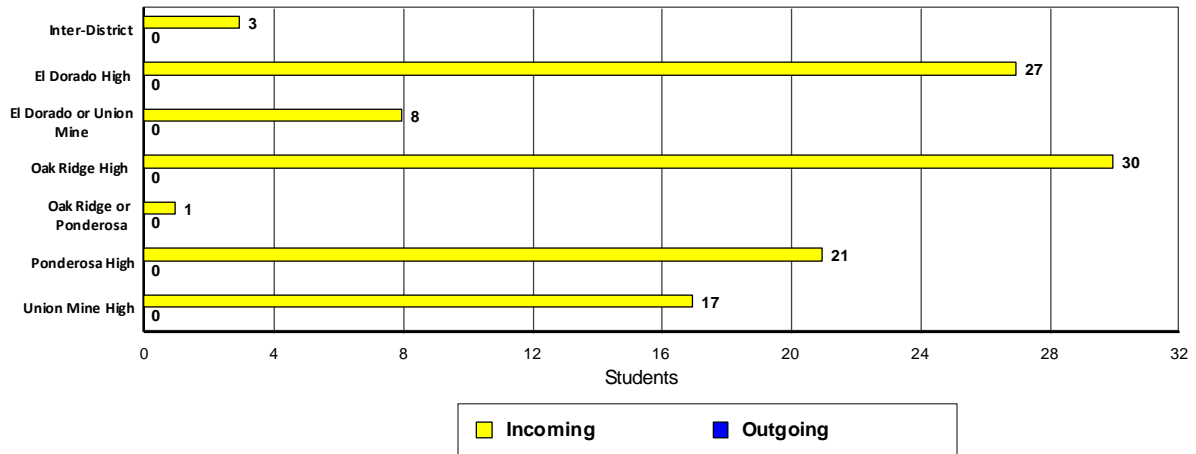
# El Dorado Union High School District Demographic Study DRAFT 2019/20

## Virtual Academy Student Legend

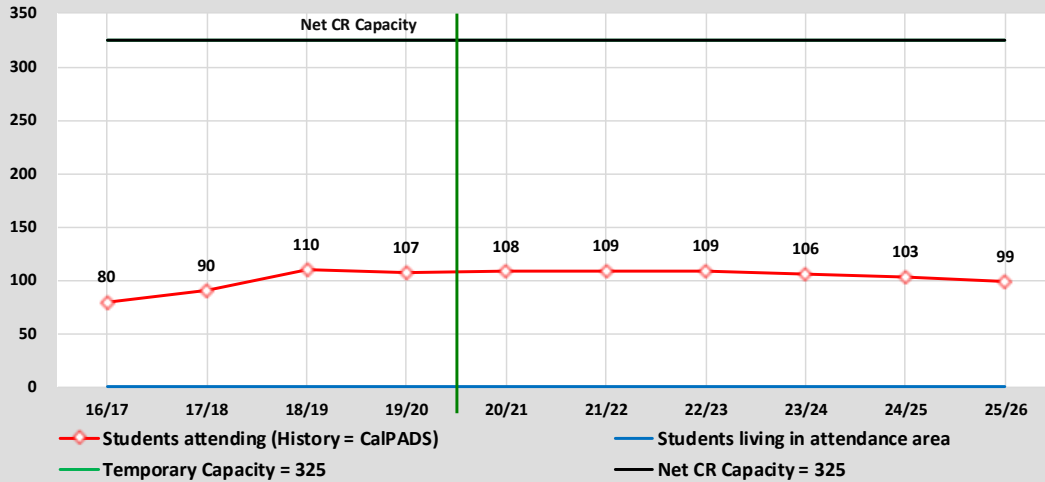
- Incoming from other Districts (3)
- Incoming from other schools (104)



## Virtual Academy Transfer Students



**Capacity & Projected Enrollment**  
**Virtual Academy**



District Loading Standards  
 Traditional School  
 All Portables Loaded  
 Net Classroom Count = 13  
 Grades Served = 9 - 12

**Classroom Needs Timeline**

Year	Total Students*	Annual Change	Spec. Ed. Students	Net CR Capacity	Unhoused Students	Annual CR Needed	Total CR's Needed	Available Seats	Projected Housing Units
19/20	107	-3	0	325	0	0	-9	218	
20/21	108	1	0	325	0	0	-9	217	254
21/22	109	1	0	325	0	0	-9	216	480
22/23	109	0	0	325	0	0	-9	216	478
23/24	106	-3	0	325	0	0	-9	219	559
24/25	103	-3	0	325	0	0	-9	222	694
25/26	99	-4	0	325	0	0	-9	226	732

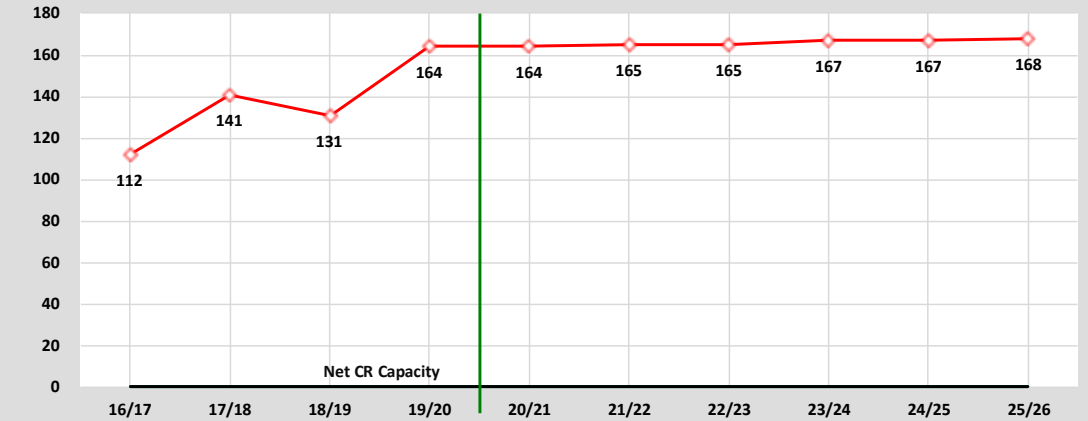
\* Based on Students Attending (Squares on Graph)  
 Net Classroom Count = 13

**Virtual Academy**

YEAR:	Students in boundary				Historic Cohorts			Weighted Average	Attendance Factors		Current Enrollment	20/21 Projection	Net Change
	16/17	17/18	18/19	19/20	16 to 17	17 to 18	18 to 19		Intra	Inter			
Grade													
K	1486	1422	1458	1393	-64	36	-65	0	0.0%	0.0%	0	0	0
1	1158	1215	1140	1229	-271	-282	-229	-127	0.0%	0.0%	0	0	0
2	1240	1249	1243	1202	91	28	62	56	0.0%	0.0%	0	0	0
3	1351	1247	1276	1256	7	27	13	17	0.0%	0.0%	0	0	0
4	1404	1313	1262	1311	-38	15	35	16	0.0%	0.0%	0	0	0
5	1551	1456	1338	1276	52	25	14	24	0.0%	0.0%	0	0	0
6	1441	1489	1495	1334	-62	39	-4	1	0.0%	0.0%	0	0	0
7	1494	1440	1501	1497	-1	12	2	5	0.0%	0.0%	0	0	0
8	1493	1526	1453	1491	32	13	-10	5	0.0%	0.0%	0	0	0
9	1568	1629	1623	1600	136	97	147	129	0.0%	1.4%	23	23	0
10	1538	1561	1596	1620	-7	-33	-3	-14	0.0%	1.7%	27	27	0
11	1536	1542	1519	1586	4	-42	-10	-18	0.0%	1.8%	29	29	0
12	1574	1529	1472	1534	-7	-70	15	-17	0.0%	1.8%	28	29	1
<b>Totals</b>	<b>18834</b>	<b>18618</b>	<b>18376</b>	<b>18329</b>	<b>-9.8</b>	<b>-10.4</b>	<b>-2.5</b>	<b>5.9</b>	<b>0.0%</b>	<b>1.7%</b>	<b>107</b>	<b>108</b>	<b>1</b>

**El Dorado Union High School District**  
**Demographic Study**  
**DRAFT 2019/20**

**Capacity & Projected Enrollment**  
**ISP**



—◆— Students attending (History = CalPADS) — Students living in attendance area — #VALUE! — Net CR Capacity =

District Loading Standards  
 Traditional School  
 All Portables Loaded  
 Net Classroom Count =  
 Grades Served = 9 - 12

**Classroom Needs Timeline**

Year	Total Students*	Annual Change	Spec. Ed. Students	Net CR Capacity	Unhoused Students	Annual CR Needed	Total CR's Needed	Available Seats	Projected Housing Units
19/20	164	33	164	0	164	14	14	0	
20/21	164	0	164	0	164	0	14	0	254
21/22	165	1	165	0	165	0	14	0	480
22/23	165	0	165	0	165	0	14	0	478
23/24	167	2	167	0	167	0	14	0	559
24/25	167	0	167	0	167	0	14	0	694
25/26	168	1	168	0	168	0	14	0	732

\* Based on Students Attending (Squares on Graph)  
 Net Classroom Count = 0

**ISP**

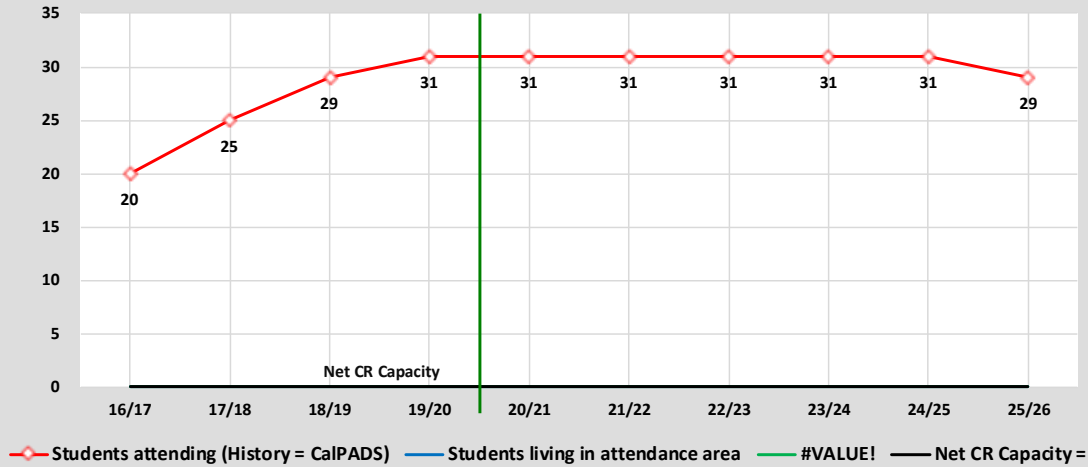
YEAR:	Students in boundary				Historic Cohorts			Weighted Average	Attendance Factors		Current Enrollment	20/21 Projection	Net Change
	16/17	17/18	18/19	19/20	16 to 17	17 to 18	18 to 19		Intra	Inter			
Grade													
K	1486	1422	1458	1393	-64	36	-65	0	0.0%	0.0%	0	0	0
1	1158	1215	1140	1229	-271	-282	-229	-127	0.0%	0.0%	0	0	0
2	1240	1249	1243	1202	91	28	62	56	0.0%	0.0%	0	0	0
3	1351	1247	1276	1256	7	27	13	17	0.0%	0.0%	0	0	0
4	1404	1313	1262	1311	-38	15	35	16	0.0%	0.0%	0	0	0
5	1551	1456	1338	1276	52	25	14	24	0.0%	0.0%	0	0	0
6	1441	1489	1495	1334	-62	39	-4	1	0.0%	0.0%	0	0	0
7	1494	1440	1501	1497	-1	12	2	5	0.0%	0.0%	0	0	0
8	1493	1526	1453	1491	32	13	-10	5	0.0%	0.0%	0	0	0
9	1568	1629	1623	1600	136	97	147	129	0.0%	0.0%	0	0	0
10	1538	1561	1596	1620	-7	-33	-3	-14	0.0%	0.0%	0	0	0
11	1536	1542	1519	1586	4	-42	-10	-18	0.0%	0.0%	0	0	0
12	1574	1529	1472	1534	-7	-70	15	-17	0.0%	0.0%	0	0	0
SDC											164	164	0
Totals	18834	18618	18376	18329	-9.8	-10.4	-2.5	5.9	#DIV/0!	#DIV/0!	164	164	0

# El Dorado Union High School District

## Demographic Study

### DRAFT 2019/20

### Capacity & Projected Enrollment NPS



District Loading Standards  
 Traditional School  
 All Portables Loaded  
 Net Classroom Count =  
 Grades Served = 9 - 12

### Classroom Needs Timeline

Year	Total Students*	Annual Change	Spec. Ed. Students	Net CR Capacity	Unhoused Students	Annual CR Needed	Total CR's Needed	Available Seats	Projected Housing Units
19/20	31	2	0	0	31	1	1	0	
20/21	31	0	0	0	31	0	1	0	254
21/22	31	0	0	0	31	0	1	0	480
22/23	31	0	0	0	31	0	1	0	478
23/24	31	0	0	0	31	0	1	0	559
24/25	31	0	0	0	31	0	1	0	694
25/26	29	-2	0	0	29	0	1	0	732

\* Based on Students Attending (Squares on Graph)  
 Net Classroom Count = 0

### NPS

YEAR: Grade	Students in boundary				Historic Cohorts			Weighted Average	Attendance Factors		Current Enrollment	20/21 Projection	Net Change
	16/17	17/18	18/19	19/20	16 to 17	17 to 18	18 to 19		Intra	Inter			
K	1486	1422	1458	1393	-64	36	-65	0	0.0%	0.0%	0	0	0
1	1158	1215	1140	1229	-271	-282	-229	-127	0.0%	0.0%	0	0	0
2	1240	1249	1243	1202	91	28	62	56	0.0%	0.0%	0	0	0
3	1351	1247	1276	1256	7	27	13	17	0.0%	0.0%	0	0	0
4	1404	1313	1262	1311	-38	15	35	16	0.0%	0.0%	0	0	0
5	1551	1456	1338	1276	52	25	14	24	0.0%	0.0%	0	0	0
6	1441	1489	1495	1334	-62	39	-4	1	0.0%	0.0%	0	0	0
7	1494	1440	1501	1497	-1	12	2	5	0.0%	0.0%	0	0	0
8	1493	1526	1453	1491	32	13	-10	5	0.0%	0.0%	0	0	0
9	1568	1629	1623	1600	136	97	147	129	0.0%	0.4%	7	7	0
10	1538	1561	1596	1620	-7	-33	-3	-14	0.0%	0.3%	5	5	0
11	1536	1542	1519	1586	4	-42	-10	-18	0.0%	0.5%	8	8	0
12	1574	1529	1472	1534	-7	-70	15	-17	0.0%	0.7%	11	11	0
<b>Totals</b>	<b>18834</b>	<b>18618</b>	<b>18376</b>	<b>18329</b>	<b>-9.8</b>	<b>-10.4</b>	<b>-2.5</b>	<b>5.9</b>	<b>0.0%</b>	<b>0.5%</b>	<b>31</b>	<b>31</b>	<b>0</b>

El Dorado Union High School District  
Demographic Study  
DRAFT 2019/20

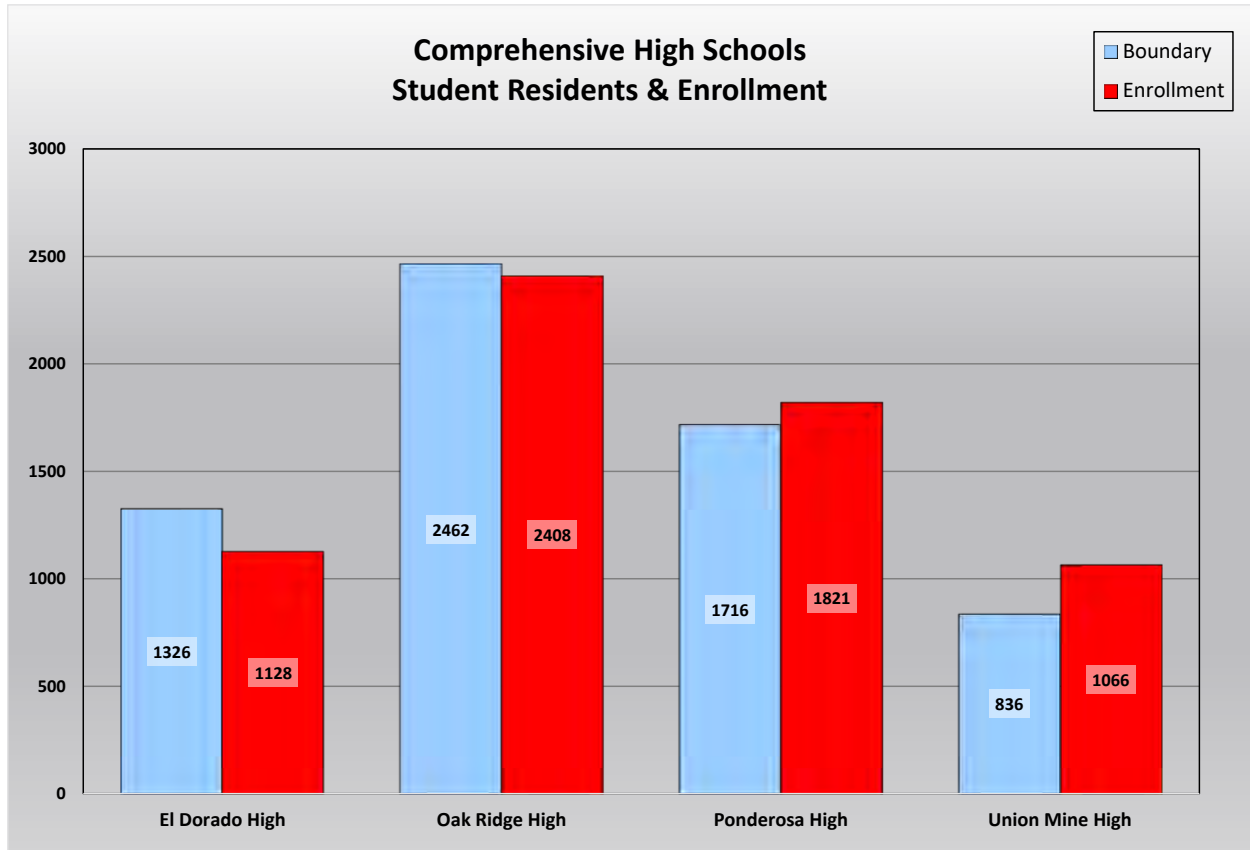
**Student Attendance Matrix**

ATTENDANCE MATRIX										
SCHOOL: AREA		SCHOOL OF ATTENDANCE							Total Residing	
		El Dorado High	Oak Ridge High	Ponderosa High	Union Mine High	Independence High	Virtual Academy	ISP		NPS
R E S I D E N C E	Inter-District	16	9	16	19	2	3	0	0	65
	El Dorado High	1,027	2	77	158	31	27	0	4	1,326
	El Dorado or Union Mine	61	0	12	126	5	8	0	0	212
	Oak Ridge High	6	2,310	90	11	7	30	0	8	2,462
	Oak Ridge or Ponderosa	0	106	6	0	1	1	0	0	114
	Ponderosa High	8	18	1,547	91	21	21	0	10	1,716
	Ponderosa or Union Mine	1	32	94	11	1	0	0	0	139
	Union Mine High	64	1	38	687	20	17	0	9	836
	Correction Factor*	-55	-70	-59	-37	-7	0	164	0	-64
	<b>Total Attending</b>	<b>1,128</b>	<b>2,408</b>	<b>1,821</b>	<b>1,066</b>	<b>81</b>	<b>107</b>	<b>164</b>	<b>31</b>	<b>6,806</b>
<b>Intra-Ins</b>		140	159	317	397	86	104	0	31	1,234
<b>Inter-Ins</b>		16	9	16	19	2	3	0	0	65
<b>Total In-Flow</b>		156	168	333	416	88	107	0	31	1,299
<b>Intra-Outs</b>		299	152	169	149	0	0	0	0	769
<b>Net Transfers</b>		-143	16	164	267	88	107	0	31	530
<b>% In-Flow Students</b>		13.8%	7.0%	18.3%	39.0%					19.1%
<b>% Out-Flow Students</b>		22.5%	6.2%	9.8%	17.8%					11.3%

\* The correction factor represents the difference between the student data download counts and the actual CalPADS counts.

This chart summarizes the transfers in and out of each school as were seen by the yellow dots and blue dots on the school attendance maps. In addition, the data has been analyzed to determine the total in-flow and out-flow rates for each school. The school with the largest in-flow rate is Union Mine High and the school with the largest out-flow rate is El Dorado High.

**Student Residency and Enrollment Comparison**

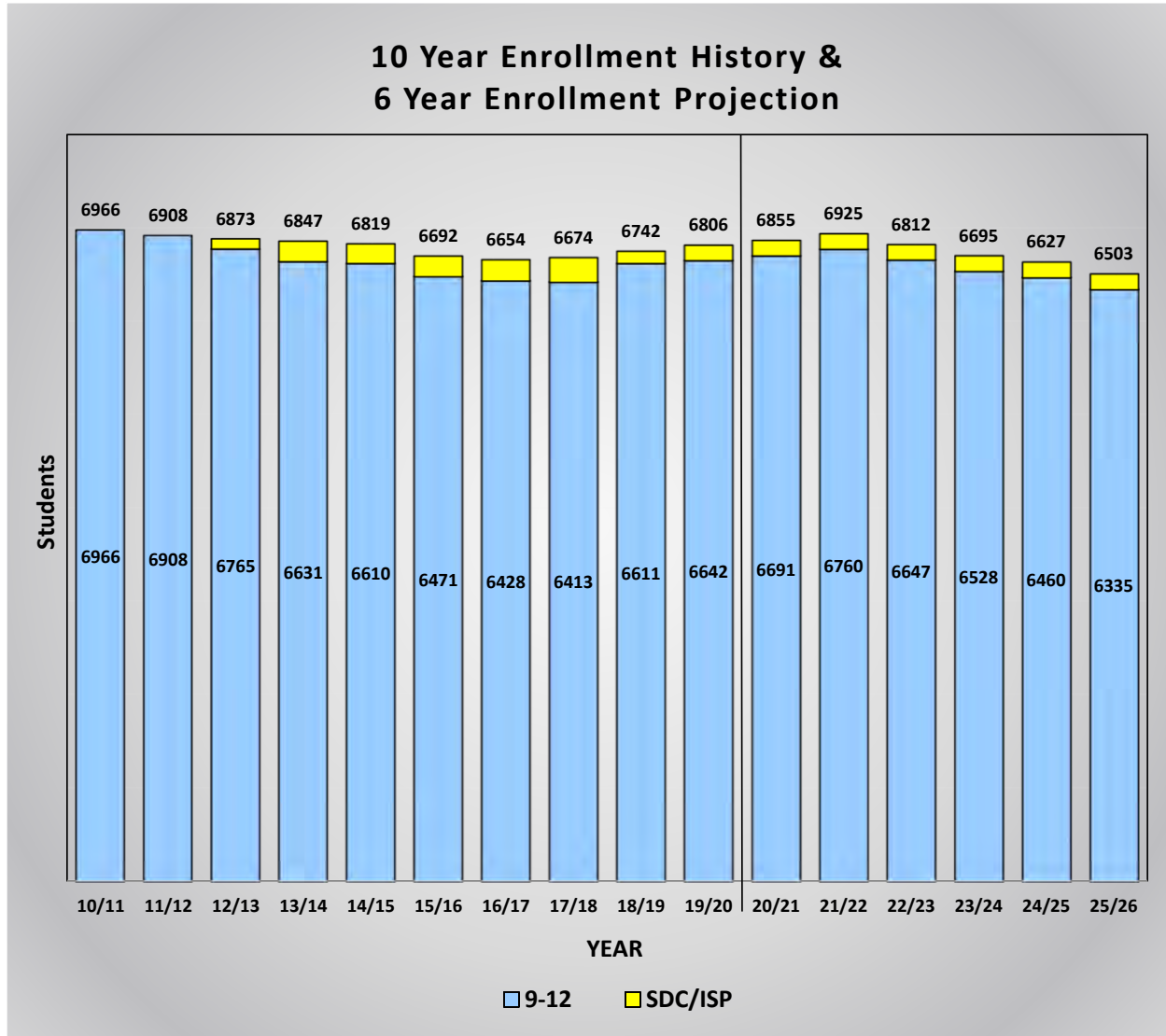


This chart compares each individual comprehensive high school enrollment to the students that reside within the school attendance boundary. Utilizing this data helps make it easy to see which schools have the largest and smallest enrollments as well as which boundaries are most populated. Schools with more students enrolled than those living in the boundary have a net transfer into the school. This is typically found at schools with special programs such as Gate or Dual Immersion, schools housing students from overcrowded or Program Improvement (PI) schools, and schools with more capacity than the student population living in the boundary.



**District Projections**

This graph shows a summary of the projections for the entire District. It shows the current enrollment for 2019/20, the historic enrollment for the past nine (9) years, and the projected enrollment for the next six (6) years. The end result is a total of 6,503 students in the District in 2025/26.





**One Year Enrollment Projection Summary**

<b>El Dorado Union High School District</b>						
<b>Enrollment Projections</b>						
<b>YEAR 20/21, 1 Year Proj.</b>						
<b>School</b>	<b>9</b>	<b>10</b>	<b>11</b>	<b>12</b>	<b>SDC/ISP</b>	<b>TOTAL</b>
El Dorado High	342	304	289	228	0	1,163
Oak Ridge High	652	621	580	591	0	2,444
Ponderosa High	445	426	485	439	0	1,795
Union Mine High	268	293	264	242	0	1,067
Independence High	0	0	22	61	0	83
Virtual Academy	23	27	29	29	0	108
ISP	0	0	0	0	164	164
NPS	7	5	8	11	0	31
<b>Totals</b>	<b>1,737</b>	<b>1,676</b>	<b>1,677</b>	<b>1,601</b>	<b>164</b>	<b>6,855</b>
Current CalPADS	1,714	1,707	1,659	1,562	164	6,806
<b>Net Change</b>	<b>23</b>	<b>-31</b>	<b>18</b>	<b>39</b>	<b>0</b>	<b>49</b>
Cohort Change		-38	-30	-58		

The projection for next year (2020/21) shows an increase of 49 students. The largest decline will be seen at 10<sup>th</sup> grade. The largest increases are at grades 9 and 12.

These projections assume the transfers between schools remain consistent. If changes in facilities, schedules, programs or policies are made, then the patterns may be impacted.

**El Dorado Union High School District**  
**Demographic Study**  
**DRAFT 2019/20**

**Enrollment Projection Summary by Grade**

<b>El Dorado Union High School District</b>										
<b>Enrollment Projection Summary by Grade</b>										
<b>Grade</b>	<b>Historic Enrollment</b>			<b>Current Enrollment</b>			<b>Projected Enrollment</b>			
	<b>16/17</b>	<b>17/18</b>	<b>18/19</b>	<b>19/20</b>	<b>20/21</b>	<b>21/22</b>	<b>22/23</b>	<b>23/24</b>	<b>24/25</b>	<b>25/26</b>
9	1,649	1,696	1,747	1,714	1,737	1,762	1,612	1,570	1,644	1,623
10	1,600	1,645	1,713	1,707	1,676	1,710	1,734	1,589	1,552	1,628
11	1,585	1,563	1,620	1,659	1,677	1,657	1,692	1,720	1,580	1,544
12	1,594	1,509	1,531	1,562	1,601	1,631	1,609	1,649	1,684	1,540
SDC	226	261	131	164	164	165	165	167	167	168
<b>Total 9-12</b>	<b>6,428</b>	<b>6,413</b>	<b>6,611</b>	<b>6,642</b>	<b>6,691</b>	<b>6,760</b>	<b>6,647</b>	<b>6,528</b>	<b>6,460</b>	<b>6,335</b>
<b>Total SDC</b>	<b>226</b>	<b>261</b>	<b>131</b>	<b>164</b>	<b>164</b>	<b>165</b>	<b>165</b>	<b>167</b>	<b>167</b>	<b>168</b>
<b>District Totals</b>	<b>6,654</b>	<b>6,674</b>	<b>6,742</b>	<b>6,806</b>	<b>6,855</b>	<b>6,925</b>	<b>6,812</b>	<b>6,695</b>	<b>6,627</b>	<b>6,503</b>

**Enrollment Projection Summary by School**

<b>El Dorado Union High School District</b>							
<b>Enrollment Projection Summary by School</b>							
<b>School</b>	<b>Current Enrollment</b>						
	<b>19/20</b>	<b>20/21</b>	<b>21/22</b>	<b>22/23</b>	<b>23/24</b>	<b>24/25</b>	<b>25/26</b>
El Dorado High	1,128	1,163	1,195	1,191	1,149	1,076	1,010
Oak Ridge High	2,408	2,444	2,501	2,514	2,402	2,372	2,326
Ponderosa High	1,821	1,795	1,761	1,646	1,676	1,705	1,713
Union Mine High	1,066	1,067	1,079	1,073	1,079	1,089	1,081
<b>High Totals</b>	<b>6,423</b>	<b>6,469</b>	<b>6,536</b>	<b>6,424</b>	<b>6,306</b>	<b>6,242</b>	<b>6,130</b>
Independence High	81	83	84	83	85	84	77
Virtual Academy	107	108	109	109	106	103	99
ISP	164	164	165	165	167	167	168
NPS	31	31	31	31	31	31	29
<b>Other Totals</b>	<b>383</b>	<b>386</b>	<b>389</b>	<b>388</b>	<b>389</b>	<b>385</b>	<b>373</b>
<b>District Totals</b>	<b>6,806</b>	<b>6,855</b>	<b>6,925</b>	<b>6,812</b>	<b>6,695</b>	<b>6,627</b>	<b>6,503</b>
<b>Annual Change</b>		49	70	-113	-117	-68	-124

**School Facility Utilization**

The following chart shows the current and projected utilization rates for each school. It has been color coded with blue representing schools with a utilization rate of under 70%, yellow representing a utilization rate of at least 70% but under 80% and red for the schools that have over 100% utilization.

<b>School Facility Utilization</b>			2019/20	2025/26	2019/20	2025/26
	Net	Net CR	Current	Projected	Current	Projected
<u>High Schools</u>	<u>Classrooms</u>	<u>Capacity</u>	<u>Enrollment</u>	<u>Enrollment</u>	<u>Utilization</u>	<u>Utilization</u>
El Dorado High	57	1,568	1,128	1,010	72.0%	64.4%
Oak Ridge High	92	2,530	2,408	2,326	95.2%	91.9%
Ponderosa High	83	2,283	1,821	1,713	79.8%	75.0%
Union Mine High	54	1,485	1,066	1,081	71.8%	72.8%
<b>Sub-Totals</b>	<b>286</b>	<b>7,865</b>	<b>6,423</b>	<b>6,130</b>	<b>81.7%</b>	<b>77.9%</b>
 <u>Other Schools</u>						
Independence High	9	225	81	77		
Virtual Academy	13	325	107	99		
ISP	0	0	164	168		
NPS	0	0	31	29		
<b>Sub-Totals</b>	<b>22</b>	<b>550</b>	<b>383</b>	<b>373</b>		
 <b>District Totals</b>	 <b>308</b>	 <b>8,415</b>	 <b>6,806</b>	 <b>6,503</b>	 <b>80.9%</b>	 <b>77.3%</b>

For 2019, the school with the highest percentage of available space is Union Mine High and the school that is impacted the most is Oak Ridge High.